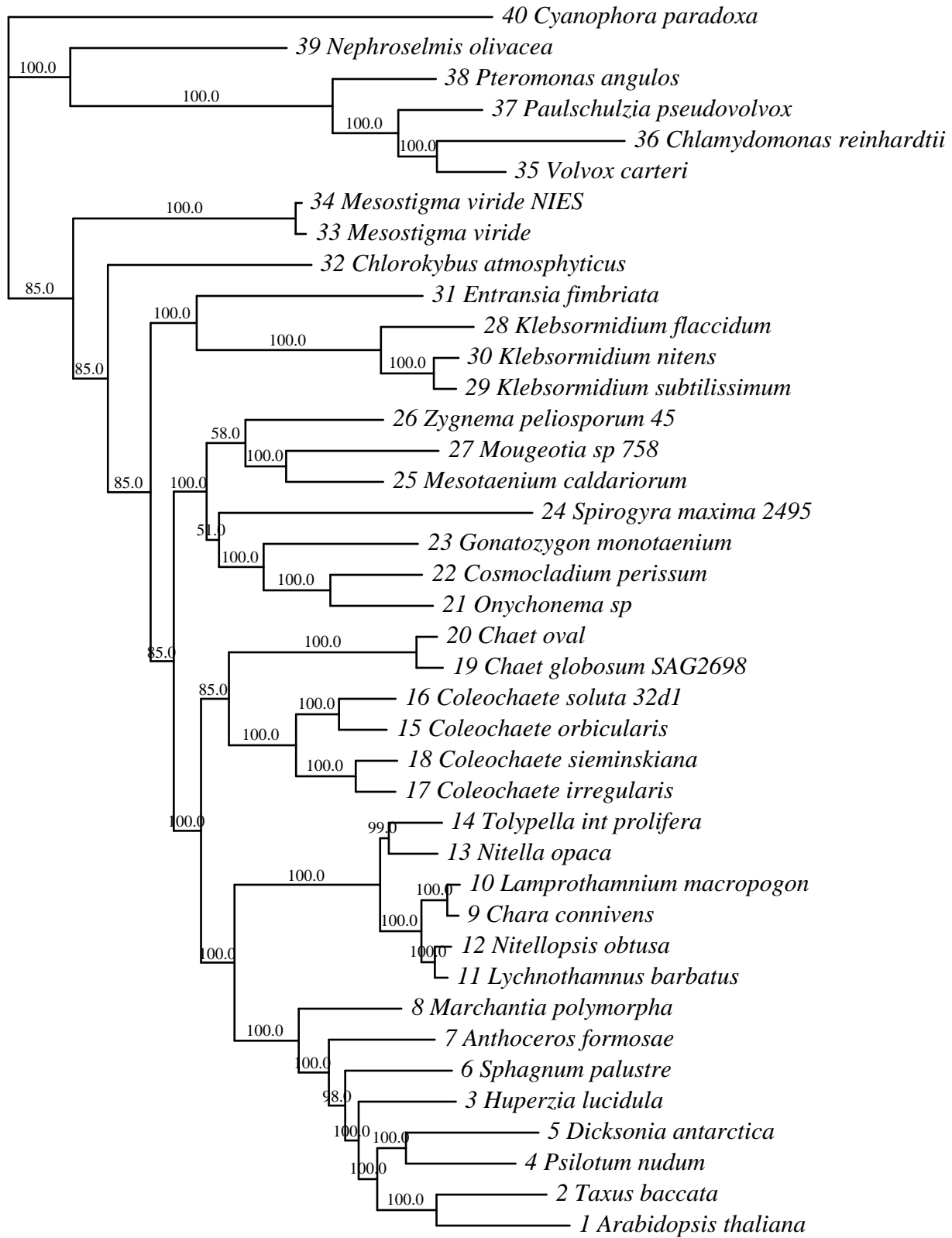
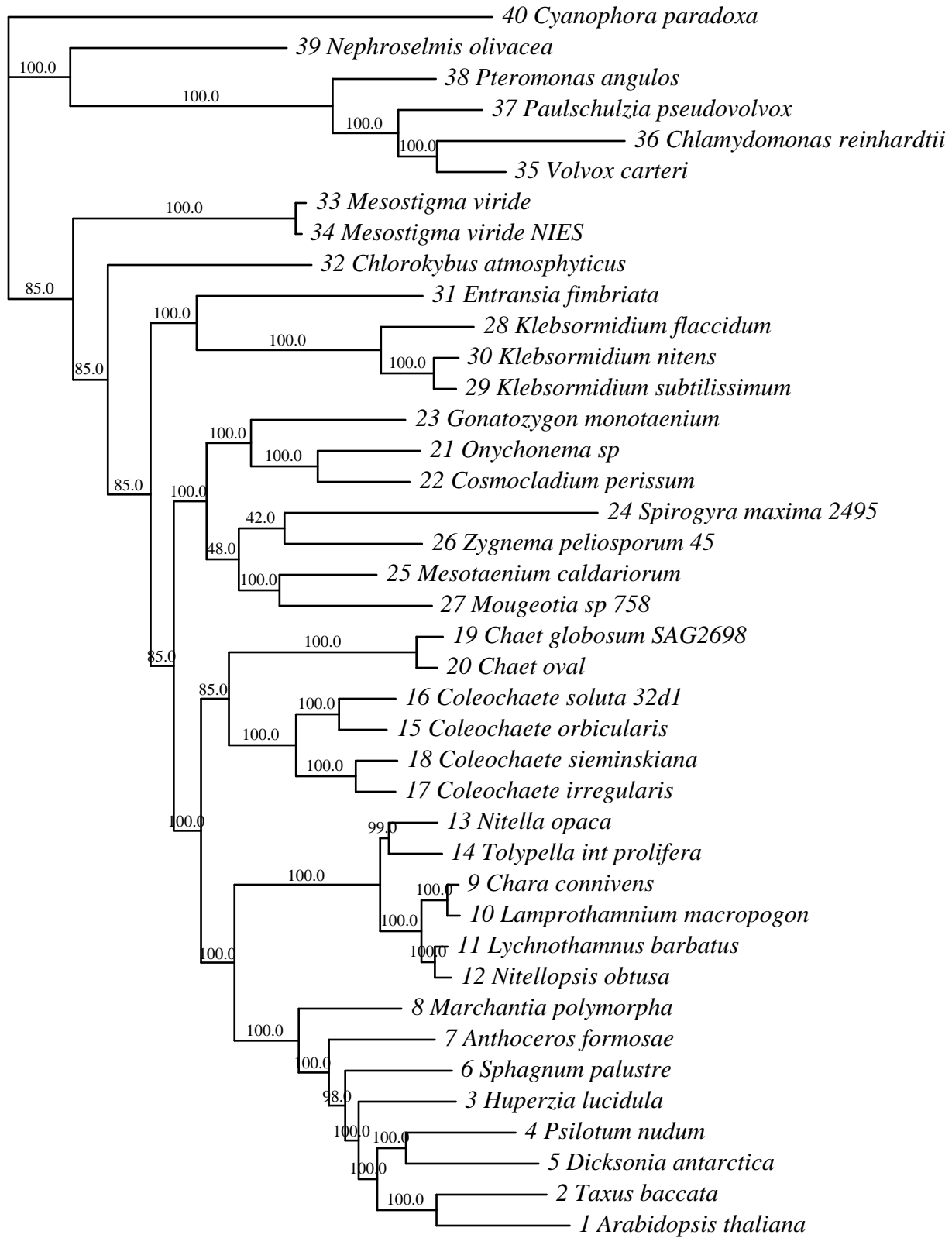


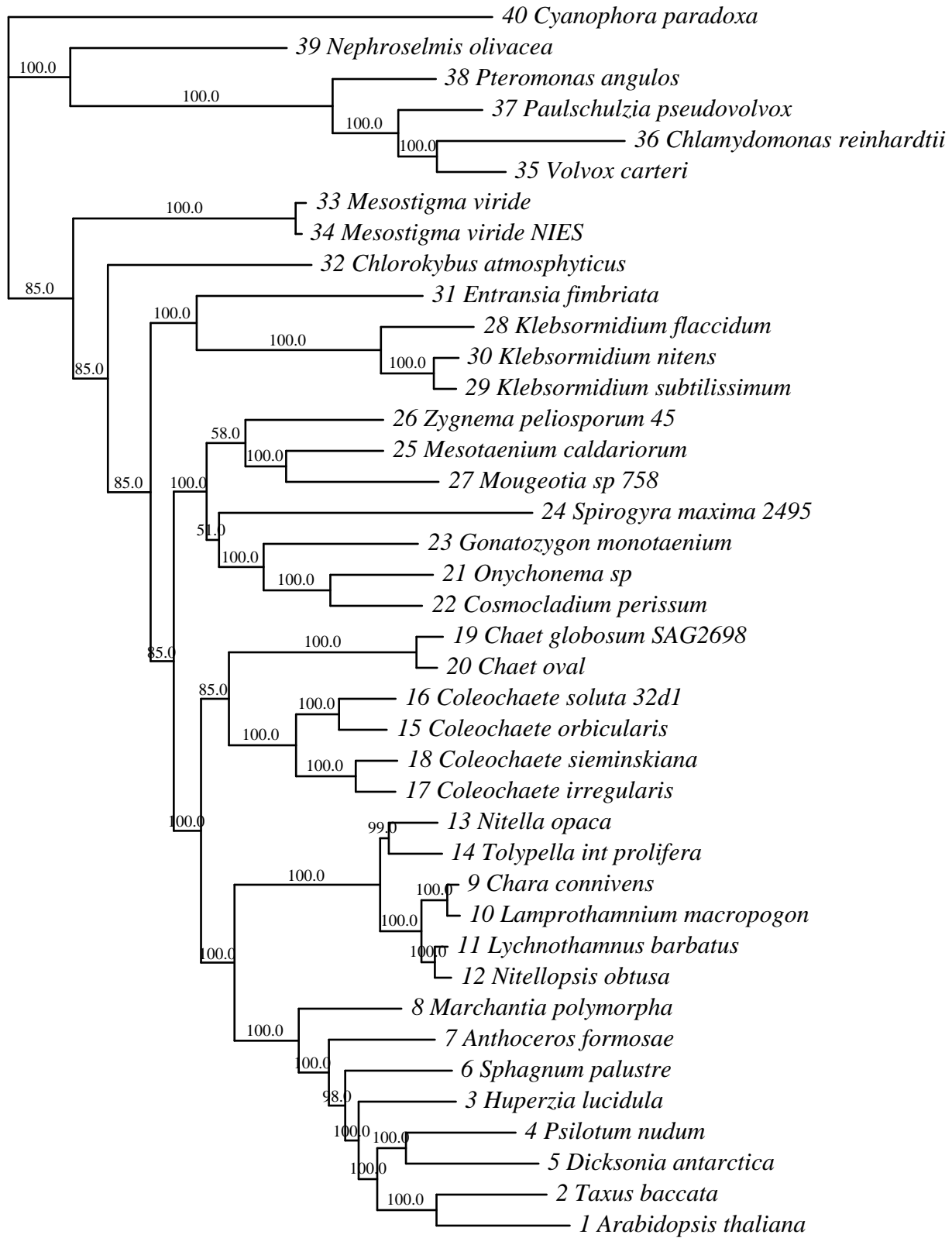
Majority-rule Consensus



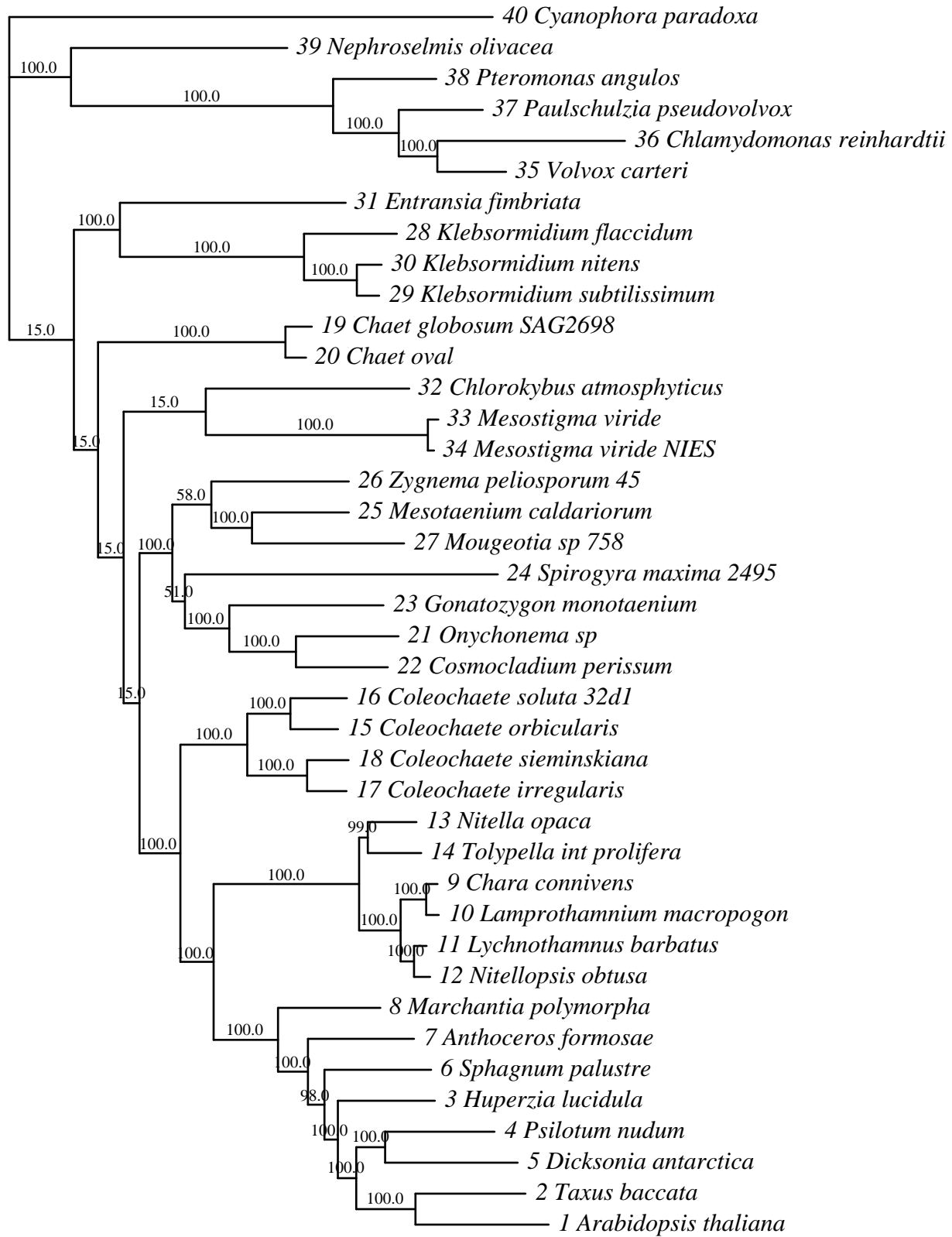
Frequency 40 of 100



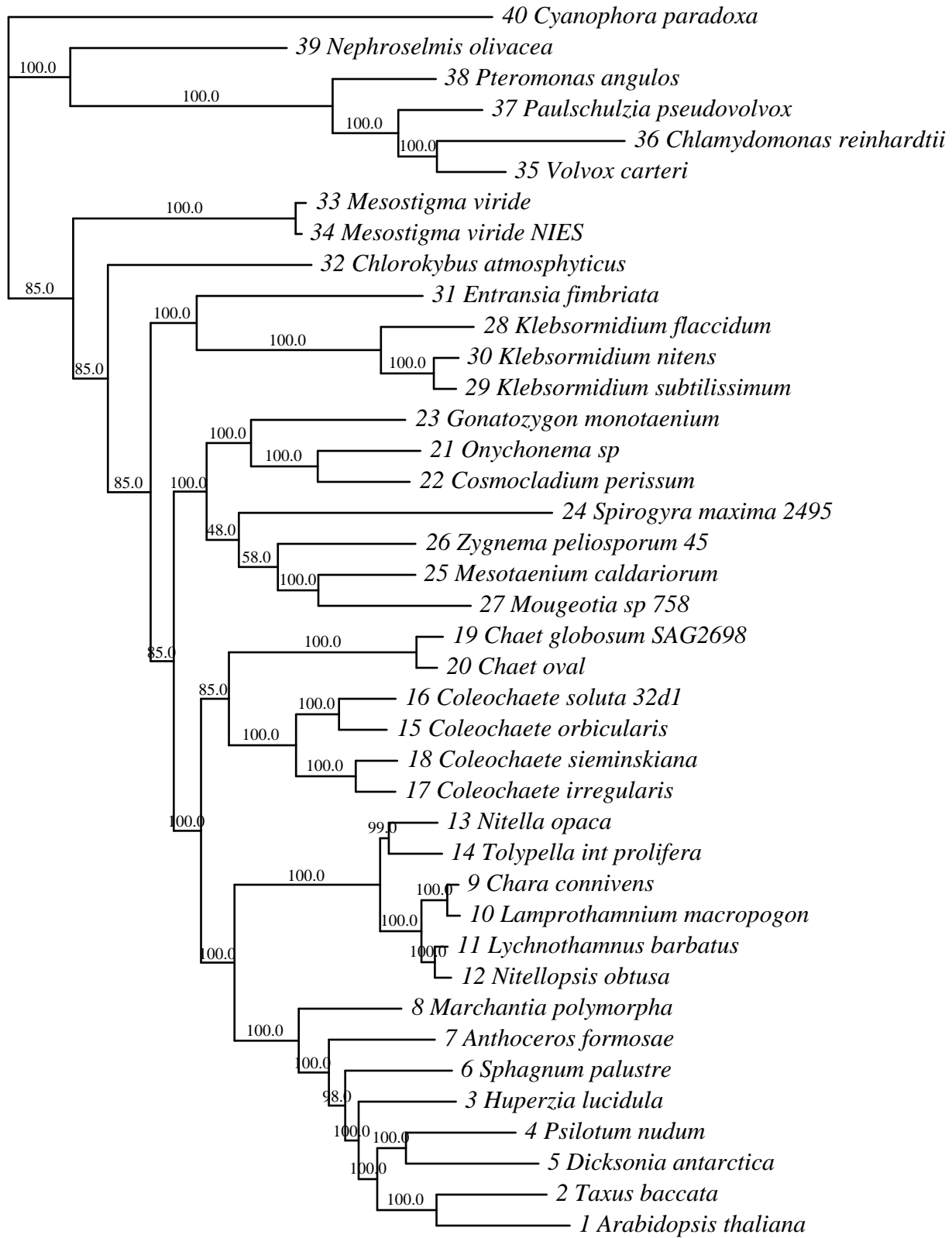
Frequency 37 of 100



Frequency 13 of 100



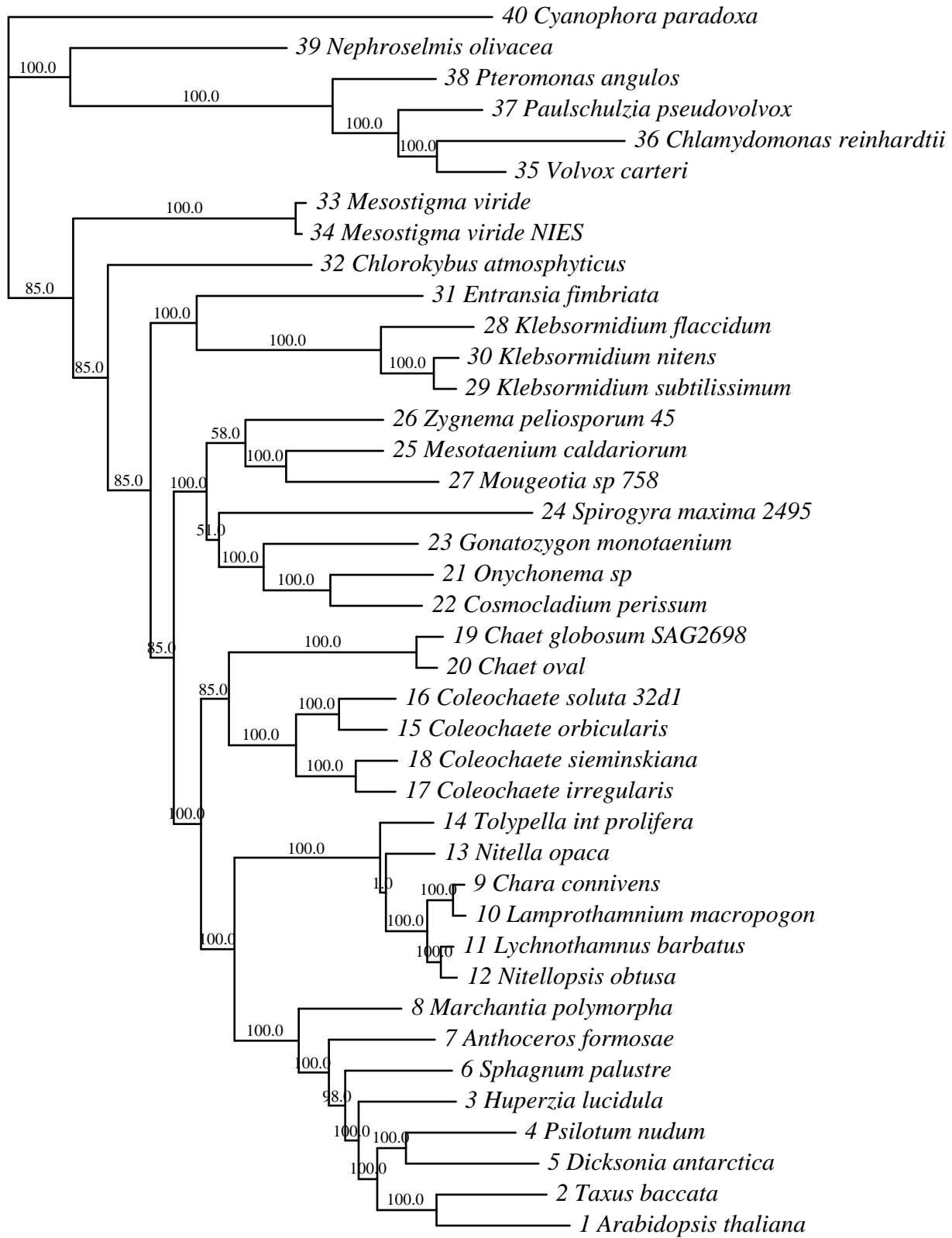
Frequency 5 of 100



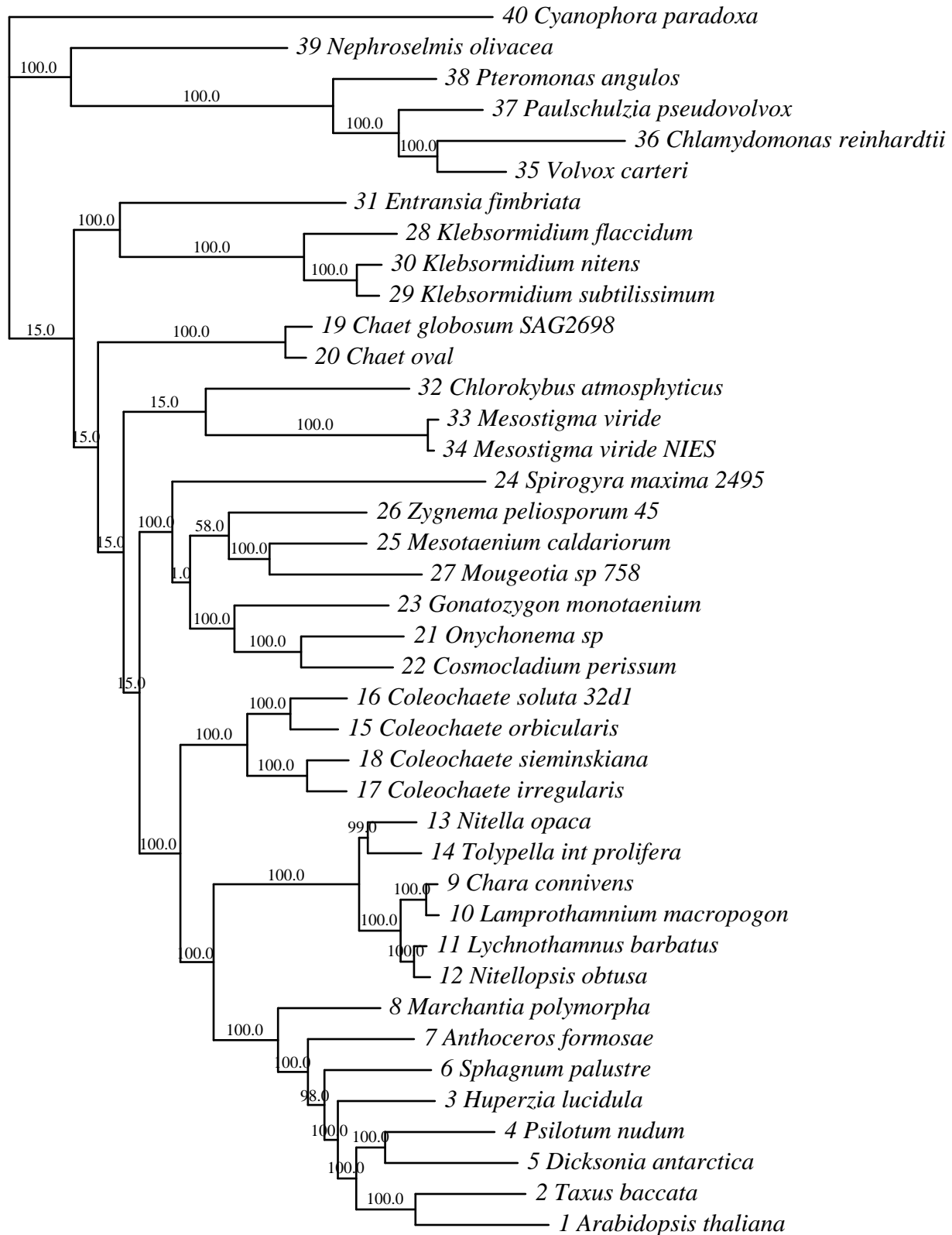
A phylogenetic tree illustrating the evolutionary relationships among 40 different species. The tree is rooted at the bottom left and branches upwards. Bootstrap values are provided for many of the internal nodes, indicating the confidence in the branching order. The species names are listed to the right of the tree, each preceded by a number.

- 40 *Cyanophora paradoxa*
- 39 *Nephroselmis olivacea*
- 38 *Pteromonas angulos*
- 37 *Paulschulzia pseudovolvox*
- 36 *Chlamydomonas reinhardtii*
- 35 *Volvox carteri*
- 33 *Mesostigma viride*
- 34 *Mesostigma viride NIES*
- 32 *Chlorokybus atmosphyticus*
- 31 *Entransia fimbriata*
- 28 *Klebsormidium flaccidum*
- 30 *Klebsormidium nitens*
- 29 *Klebsormidium subtilissimum*
- 23 *Gonatozygon monotaenium*
- 21 *Onychonema sp*
- 22 *Cosmocladium perissum*
- 24 *Spirogyra maxima* 2495
- 26 *Zygnema peliosporum* 45
- 25 *Mesotaenium caldarium*
- 27 *Mougeotia sp* 758
- 19 *Chaet globosum* SAG2698
- 20 *Chaet oval*
- 16 *Coleochaete soluta* 32dl
- 15 *Coleochaete orbicularis*
- 18 *Coleochaete sieminskiana*
- 17 *Coleochaete irregularis*
- 13 *Nitella opaca*
- 14 *Tolypella int prolifera*
- 9 *Chara connivens*
- 10 *Lamprothamnium macropogon*
- 11 *Lychnothamnus barbatus*
- 12 *Nitelopsis obtusa*
- 8 *Marchantia polymorpha*
- 7 *Anthoceros formosae*
- 3 *Huperzia lucidula*
- 6 *Sphagnum palustre*
- 4 *Psilotum nudum*
- 5 *Dicksonia antarctica*
- 2 *Taxus baccata*
- 1 *Arabidopsis thaliana*

Frequency 1 of 100



Frequency 1 of 100



Frequency 1 of 100

