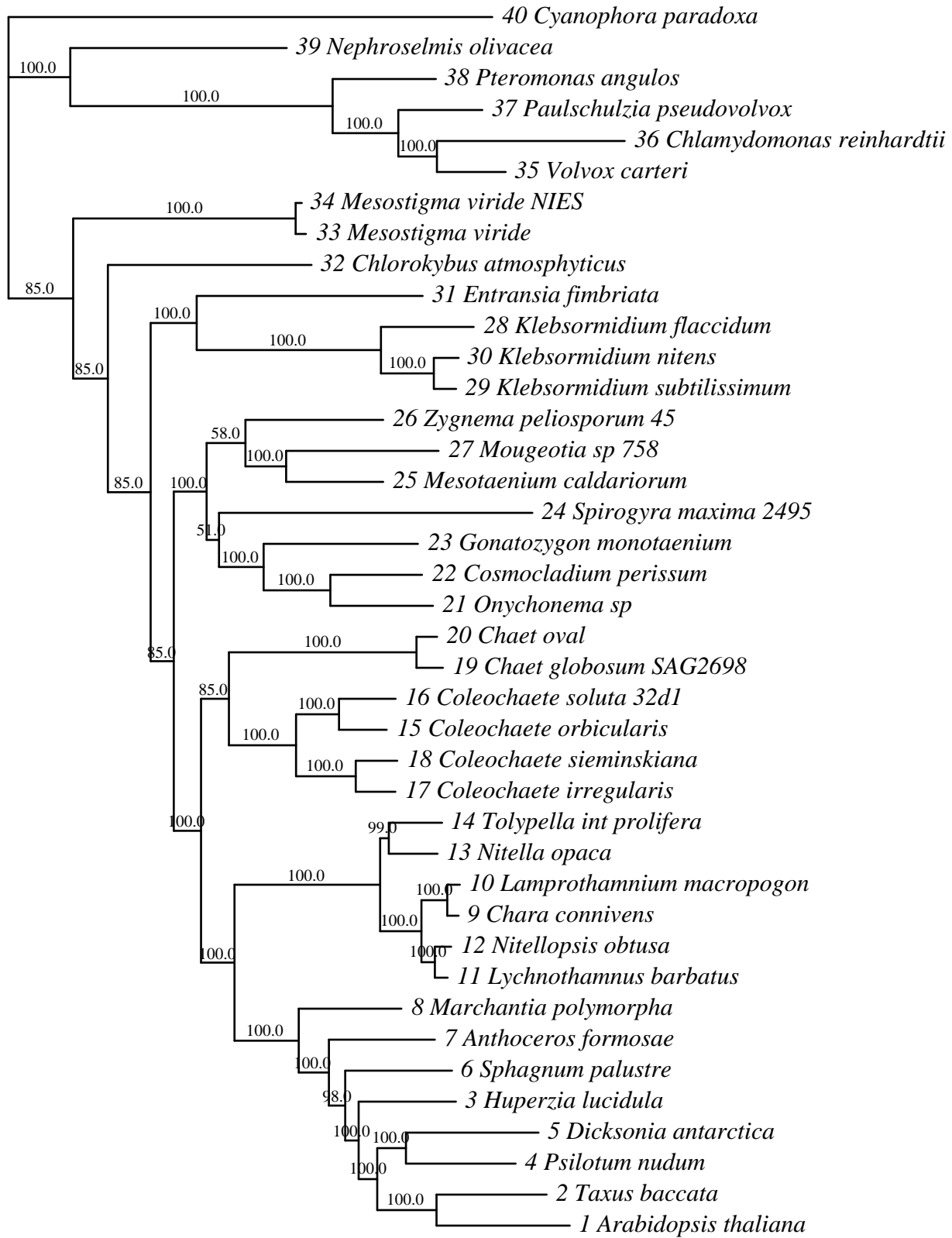


## Majority-rule Consensus



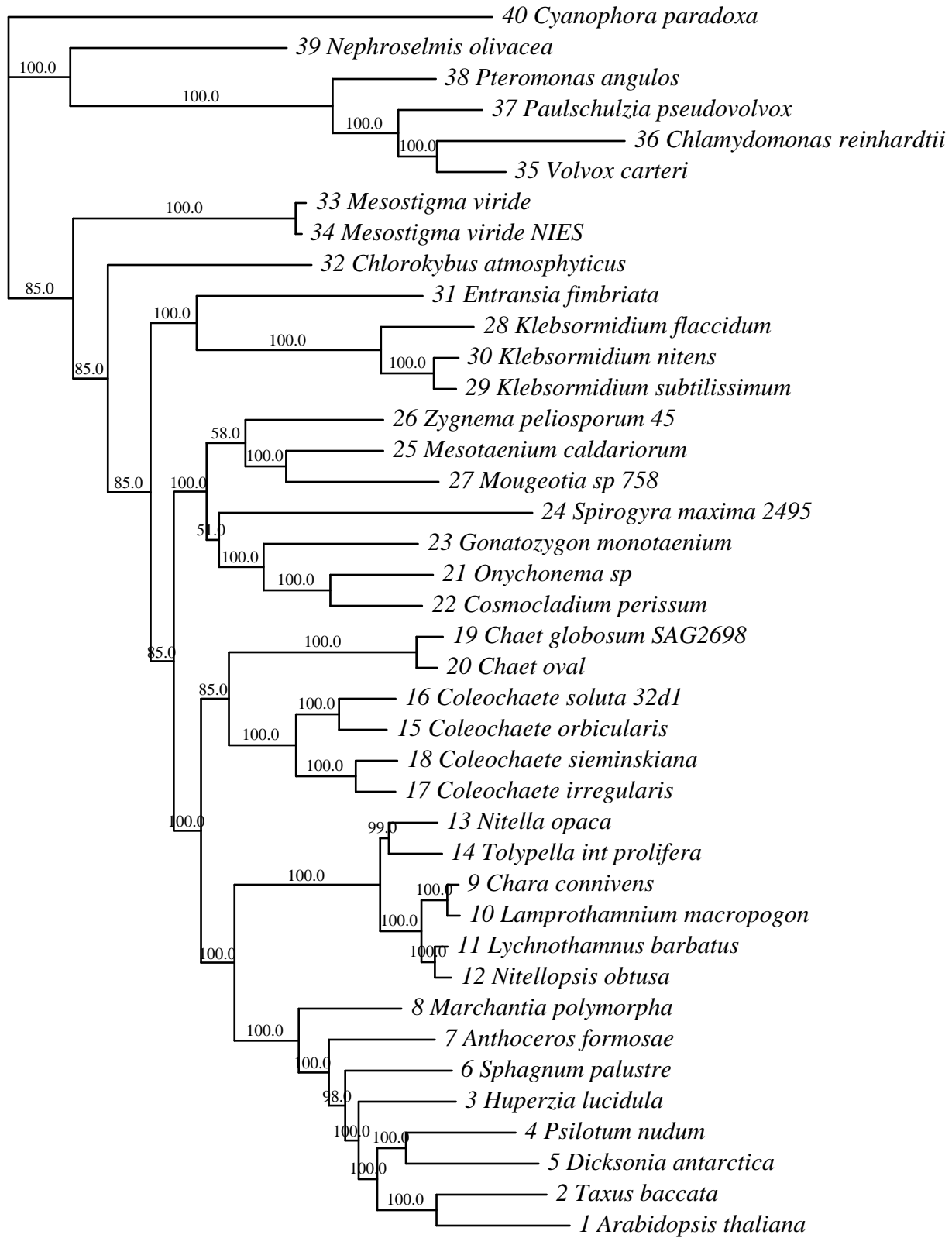
Phylogenetic tree showing relationships between various species, with bootstrap values indicated at the nodes. The species are numbered 1 through 40, corresponding to the list on the right.

Species list (from top to bottom):

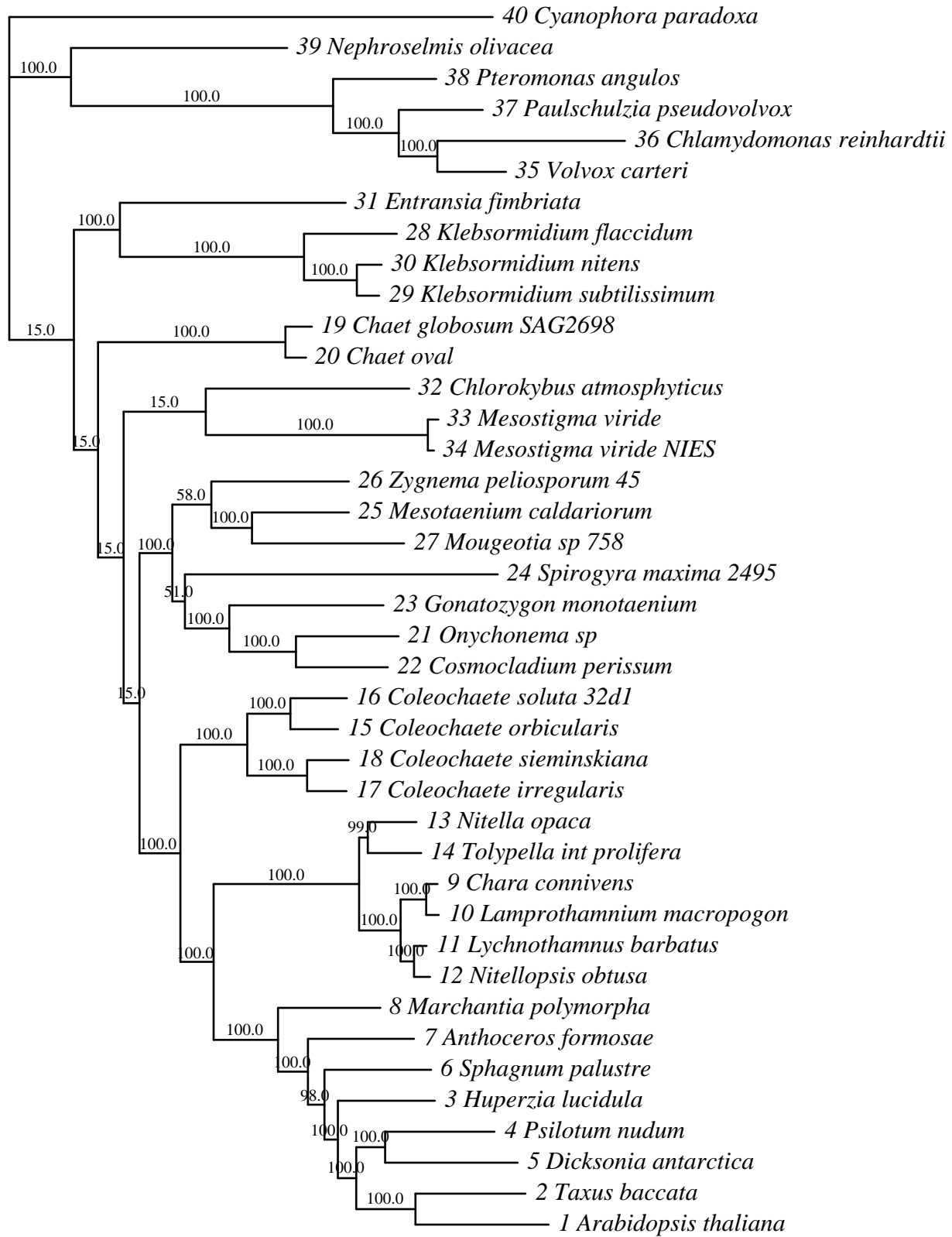
- 40 *Cyanophora paradoxa*
- 39 *Nephroselmis olivacea*
- 38 *Pteromonas angulos*
- 37 *Paulschulzia pseudovolvox*
- 36 *Chlamydomonas reinhardtii*
- 35 *Volvox carteri*
- 33 *Mesostigma viride*
- 34 *Mesostigma viride* NIES
- 32 *Chlorokybus atmosphyticus*
- 31 *Entransia fimbriata*
- 28 *Klebsormidium flaccidum*
- 30 *Klebsormidium nitens*
- 29 *Klebsormidium subtilissimum*
- 23 *Gonatozygon monotaenium*
- 21 *Onychonema* sp
- 22 *Cosmocladium perissum*
- 24 *Spirogyra maxima* 2495
- 26 *Zygnema peliosporum* 45
- 25 *Mesotaenium caldariorum*
- 27 *Mougeotia* sp 758
- 19 *Chaet globosum* SAG2698
- 20 *Chaet oval*
- 16 *Coleochaete soluta* 32d1
- 15 *Coleochaete orbicularis*
- 18 *Coleochaete sieminskiana*
- 17 *Coleochaete irregularis*
- 13 *Nitella opaca*
- 14 *Tolypella int prolifera*
- 9 *Chara connivens*
- 10 *Lamprothamnium macropogon*
- 11 *Lychnothamnus barbatus*
- 12 *Nitellopsis obtusa*
- 8 *Marchantia polymorpha*
- 7 *Anthoceros formosae*
- 6 *Sphagnum palustre*
- 3 *Huperzia lucidula*
- 4 *Psilotum nudum*
- 5 *Dicksonia antarctica*
- 2 *Taxus baccata*
- 1 *Arabidopsis thaliana*

0.1

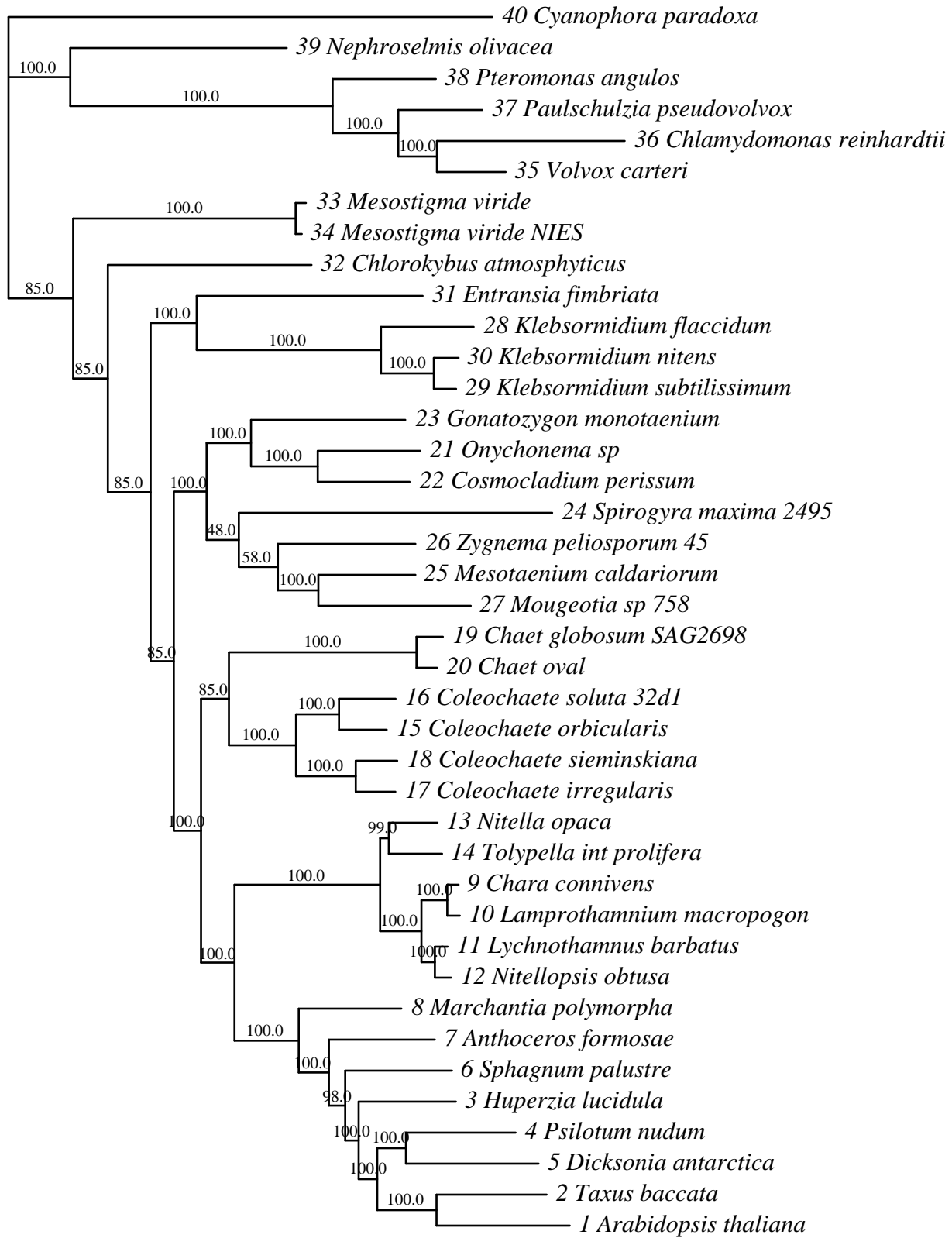
# Frequency 37 of 100



# Frequency 13 of 100



# Frequency 5 of 100

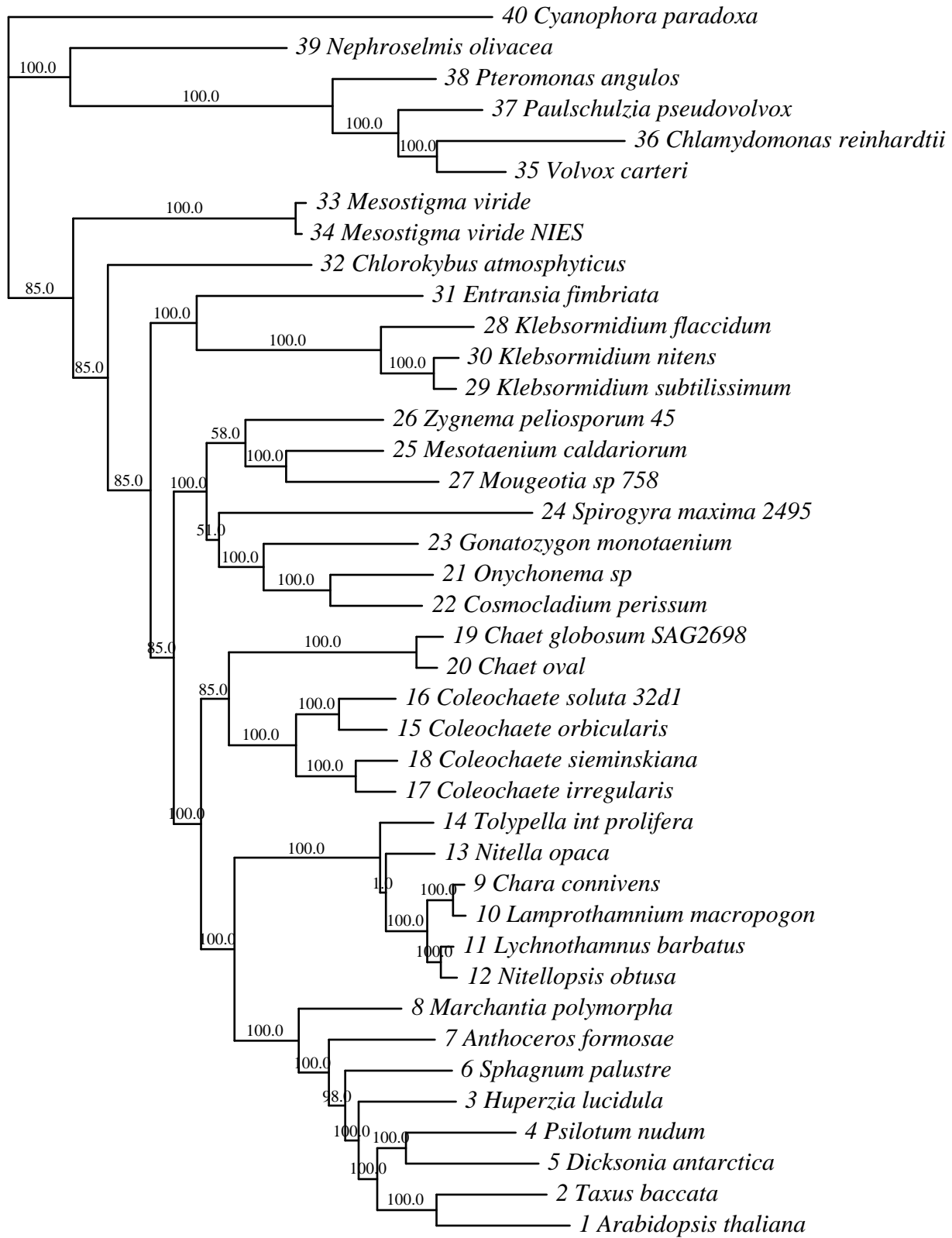


A phylogenetic tree illustrating the evolutionary relationships among 40 different species. The tree is rooted at the bottom left and branches upwards. Bootstrap values are provided for many of the internal nodes, indicating the confidence in the branching order. The species names are listed to the right of the tree, each preceded by a number.

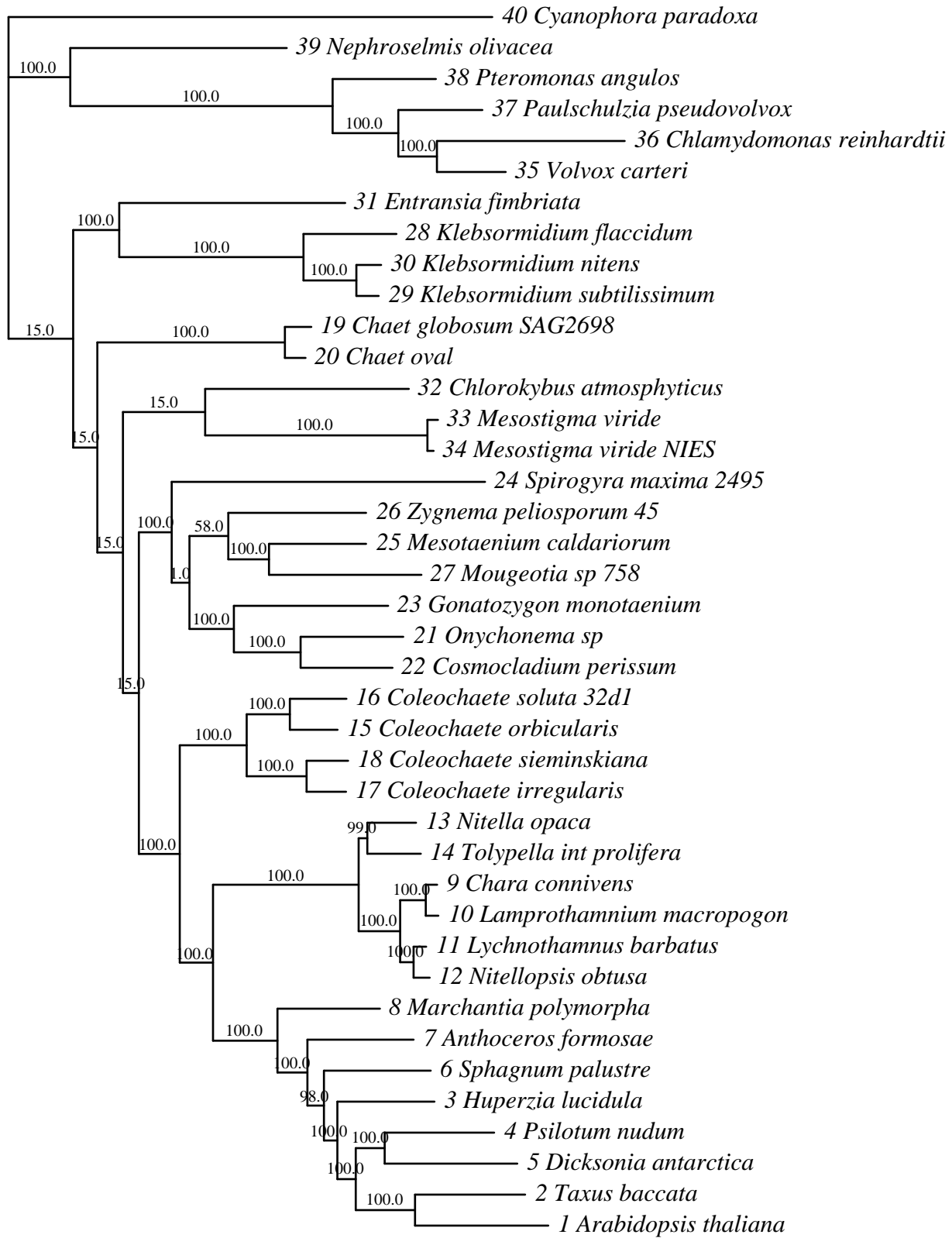
- 40 *Cyanophora paradoxa*
- 39 *Nephroselmis olivacea*
- 38 *Pteromonas angulos*
- 37 *Paulschulzia pseudovolvox*
- 36 *Chlamydomonas reinhardtii*
- 35 *Volvox carteri*
- 33 *Mesostigma viride*
- 34 *Mesostigma viride NIES*
- 32 *Chlorokybus atmosphyticus*
- 31 *Entransia fimbriata*
- 28 *Klebsormidium flaccidum*
- 30 *Klebsormidium nitens*
- 29 *Klebsormidium subtilissimum*
- 23 *Gonatozygon monotaenium*
- 21 *Onychonema sp*
- 22 *Cosmocladium perissum*
- 24 *Spirogyra maxima* 2495
- 26 *Zygnema peliosporum* 45
- 25 *Mesotaenium caldariorum*
- 27 *Mougeotia sp* 758
- 19 *Chaet globosum* SAG2698
- 20 *Chaet oval*
- 16 *Coleochaete soluta* 32d1
- 15 *Coleochaete orbicularis*
- 18 *Coleochaete sieminskiana*
- 17 *Coleochaete irregularis*
- 13 *Nitella opaca*
- 14 *Tolypella int prolifera*
- 9 *Chara connivens*
- 10 *Lamprothamnium macropogon*
- 11 *Lychnothamnus barbatus*
- 12 *Nitellopsis obtusa*
- 8 *Marchantia polymorpha*
- 7 *Anthoceros formosae*
- 3 *Huperzia lucidula*
- 6 *Sphagnum palustre*
- 4 *Psilotum nudum*
- 5 *Dicksonia antarctica*
- 2 *Taxus baccata*
- 1 *Arabidopsis thaliana*

0.1

# Frequency 1 of 100



# Frequency 1 of 100





# Frequency 1 of 100

