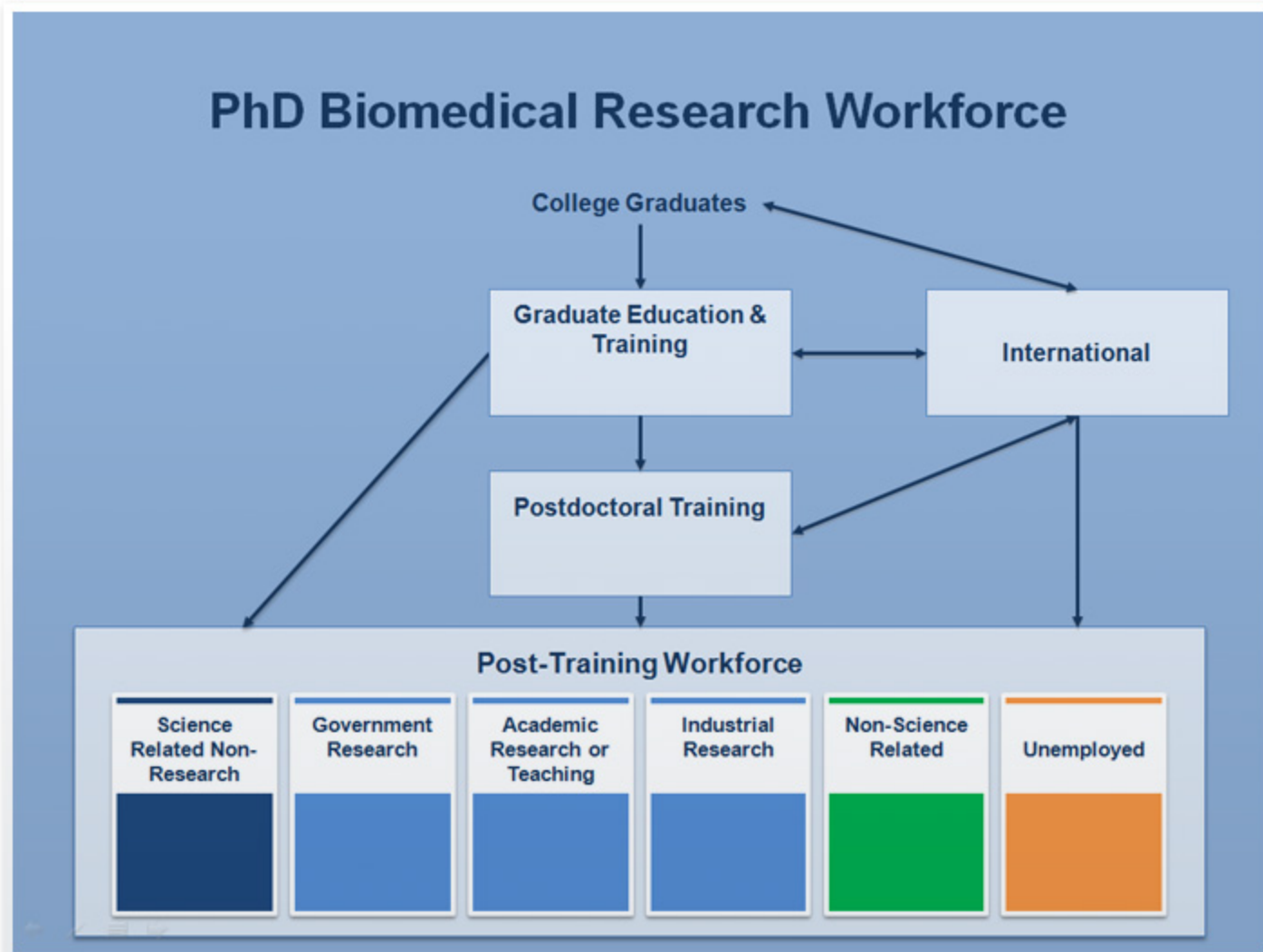
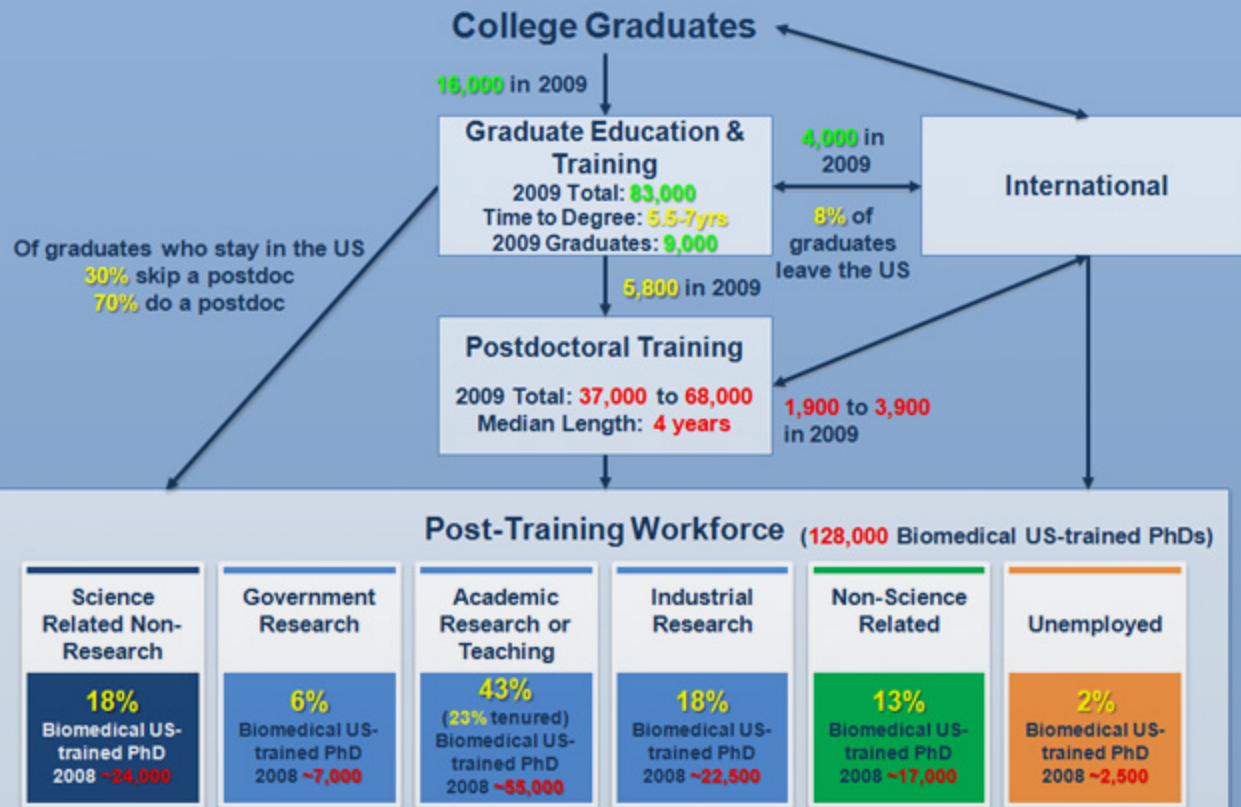


# PhD Biomedical Research Workforce



# PhD Biomedical Research Workforce



## S&E Ph.D.s surveyed in 2010

	Received degree 2005-2007	Received degree 2008-2009
Unemployed	1.5%	1.9%
Involuntarily out of field	1.5%	1.9%
Median annual salary	\$65,000	\$56,000

Source: NSF Science & Engineering Indicators (2014)

Figure 3-6  
**Occupational distribution of S&E highest degree holders, by field of highest degree: 2010**

Percent

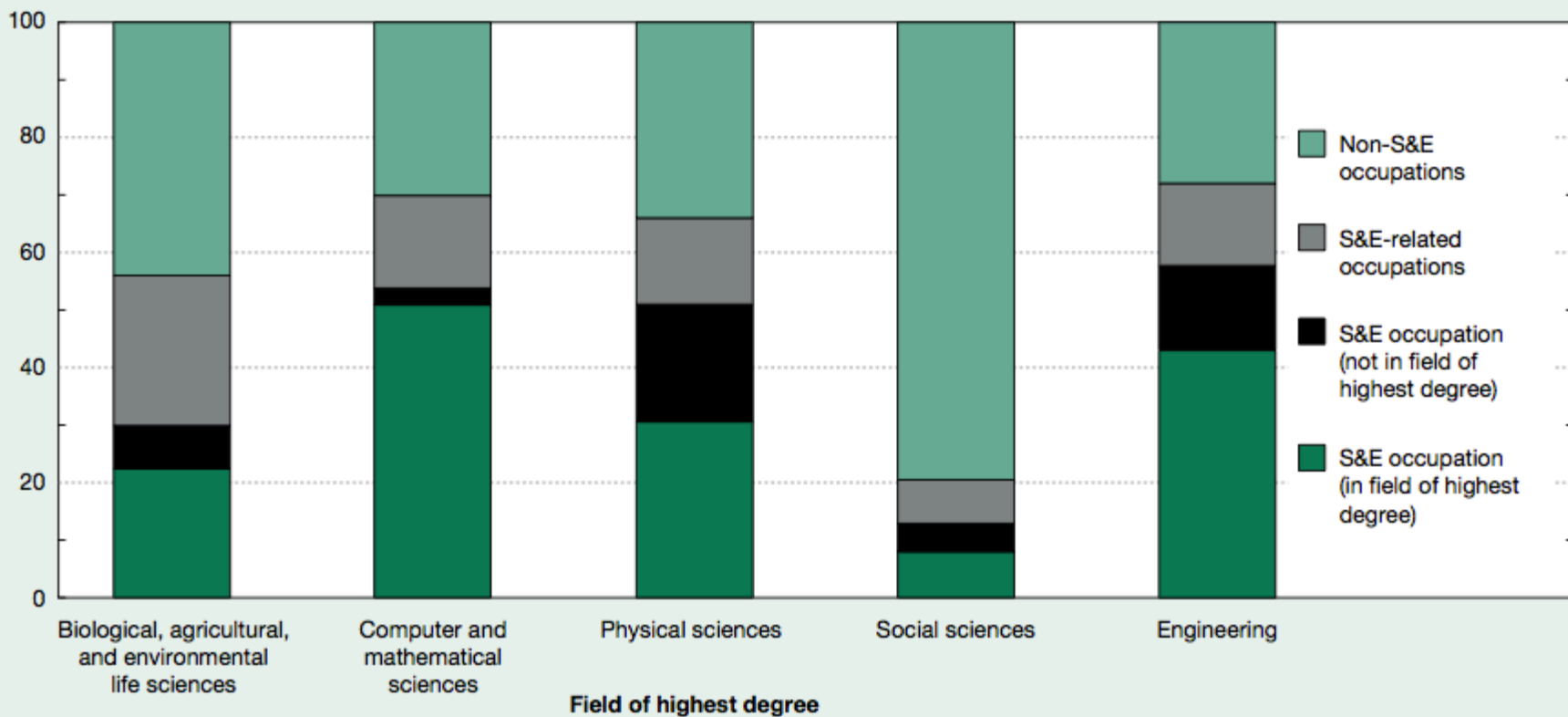
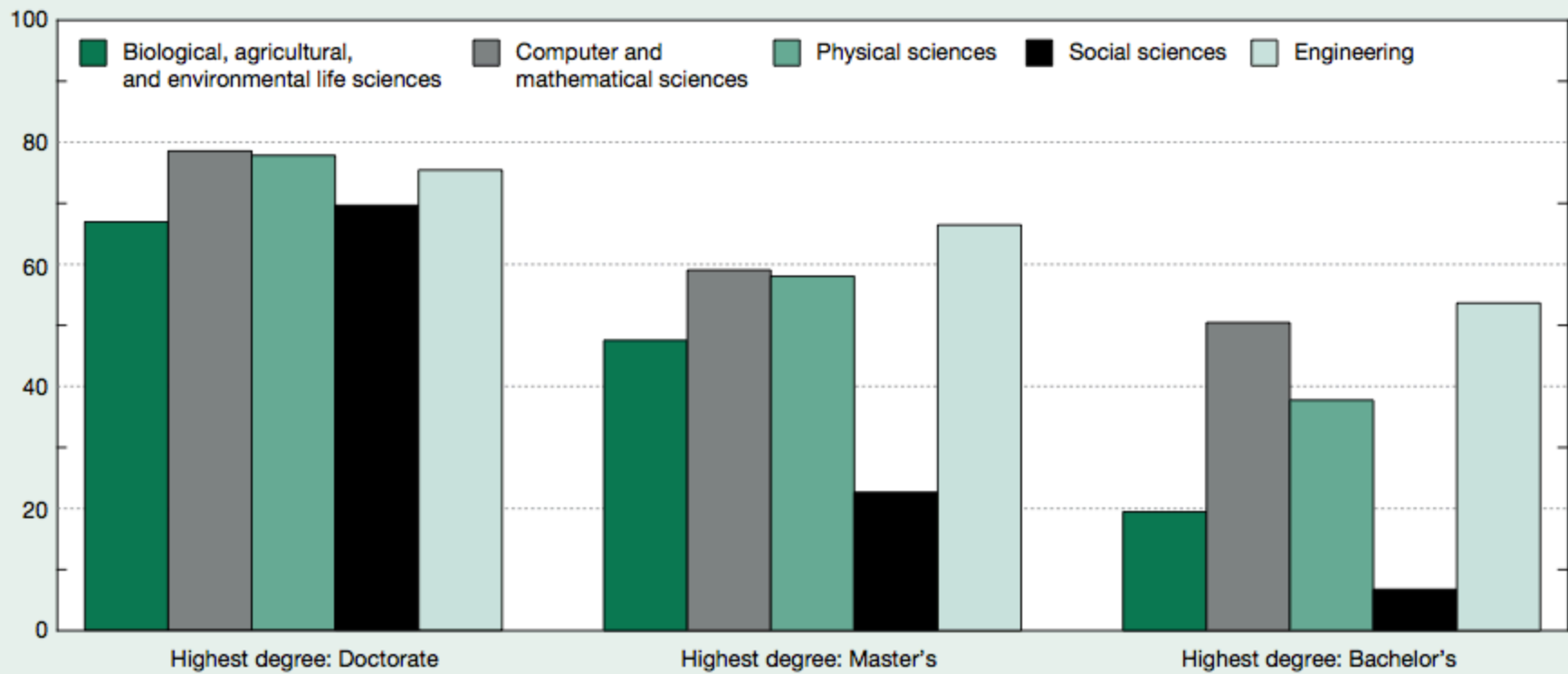


Figure 3-7  
**S&E degree holders working in S&E occupations, by level and field of S&E highest degree: 2010**

Percent



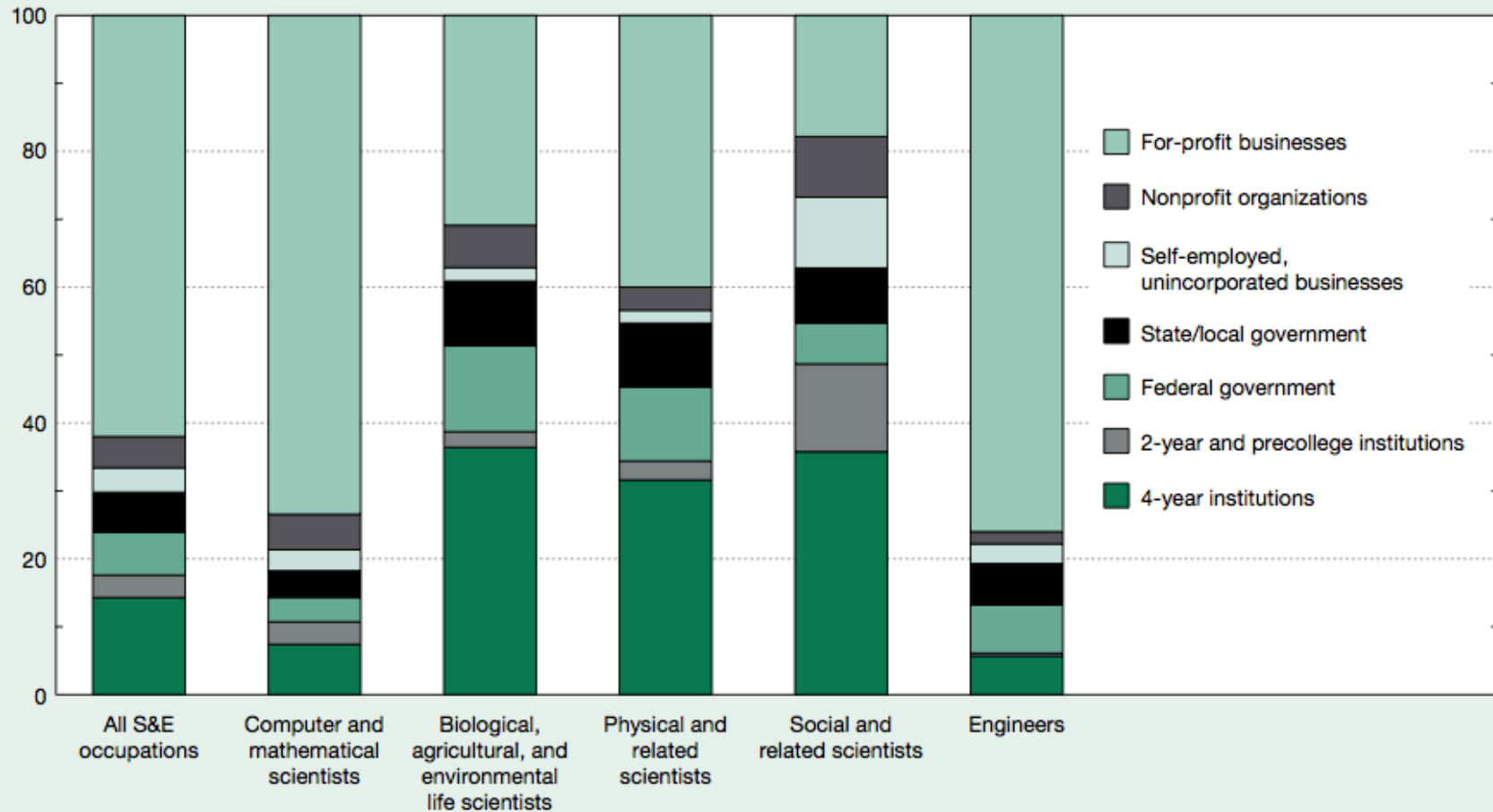
NOTE: Individuals may have degrees in more than one S&E degree field.

SOURCE: National Science Foundation, National Center for Science and Engineering Statistics, Scientists and Engineers Statistical Data System (SESTAT) (2010), <http://sestat.nsf.gov>.

Science and Engineering Indicators 2014

Figure 3-11  
**Broad S&E occupational categories, by employment sector: 2010**

Percent



SOURCE: National Science Foundation, National Center for Science and Engineering Statistics, Scientists and Engineers Statistical Data System (SESTAT) (2010) <http://sestat.nsf.gov>.

Science and Engineering Indicators 2014