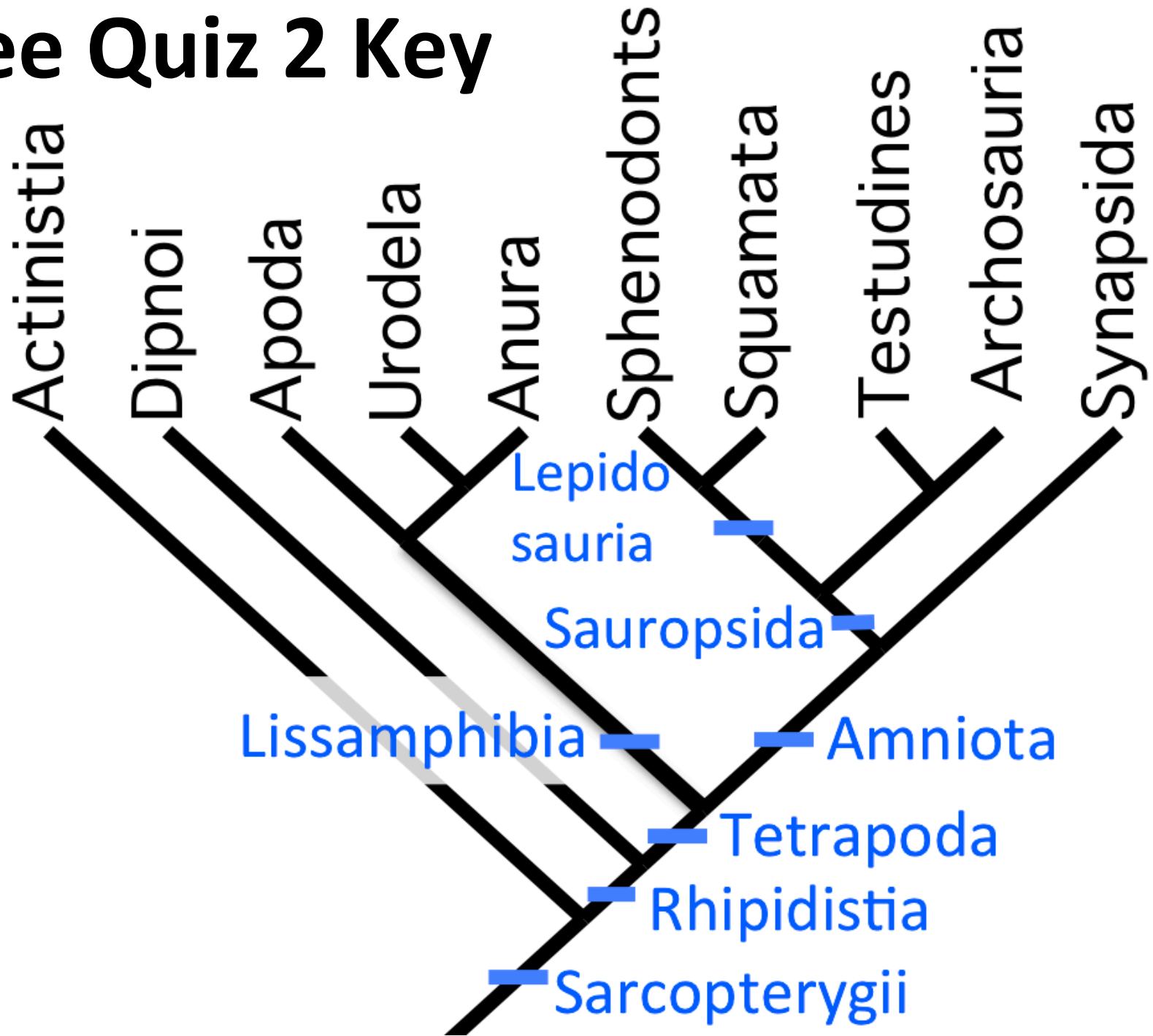
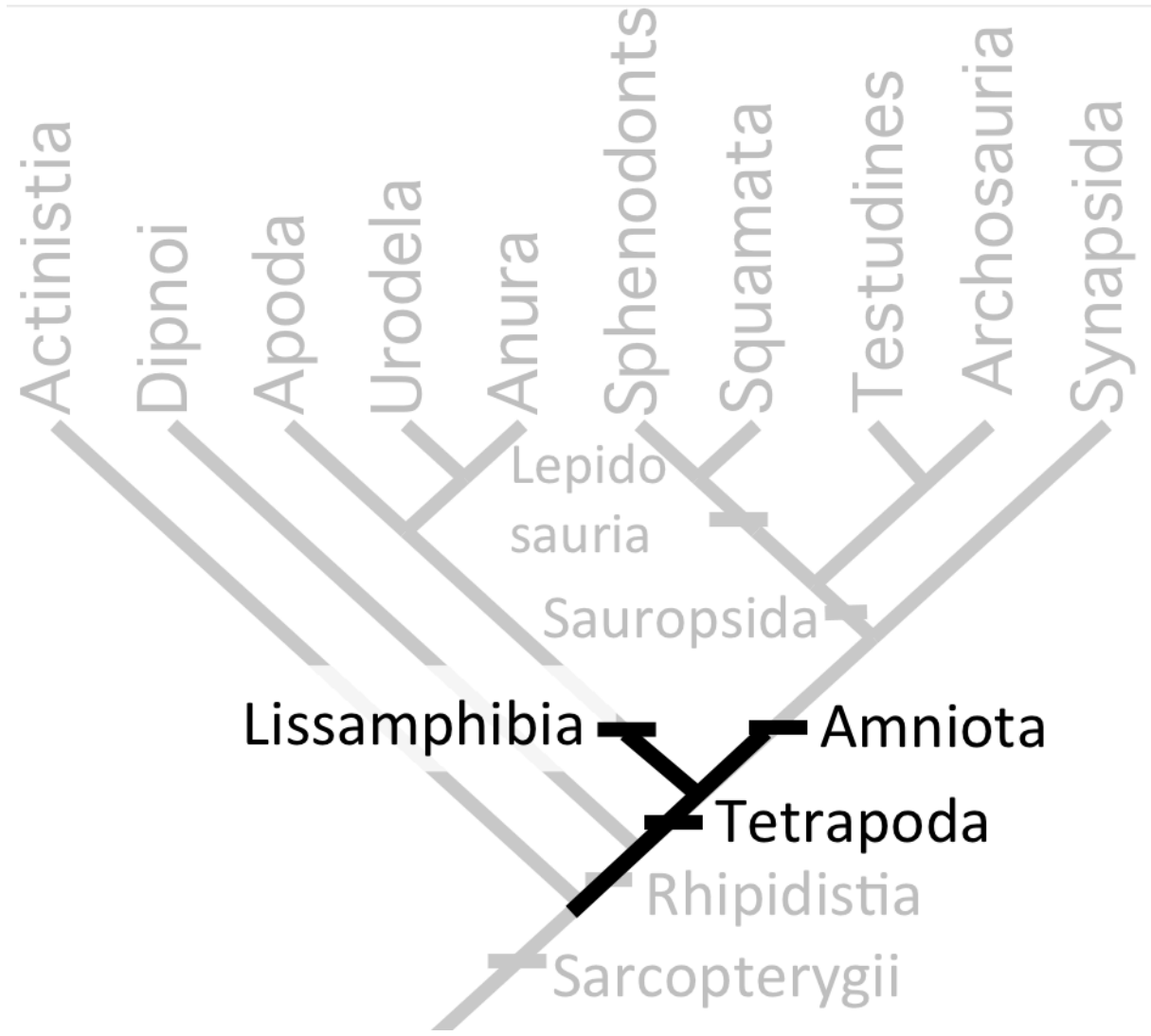
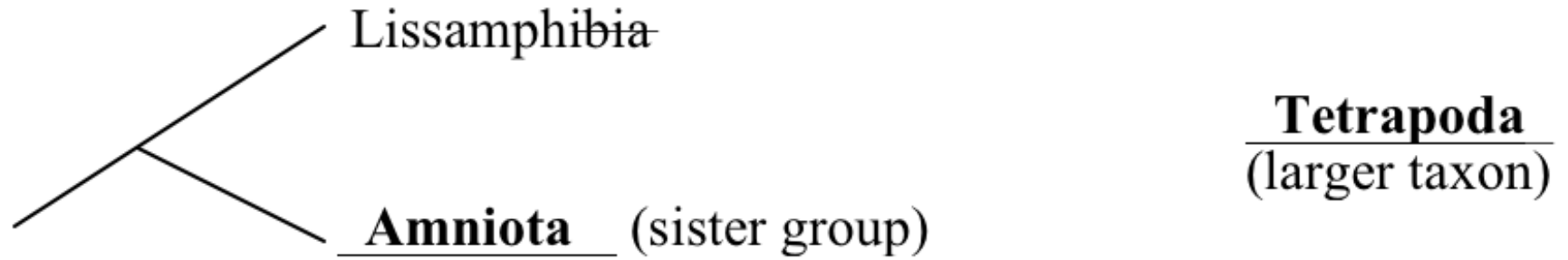


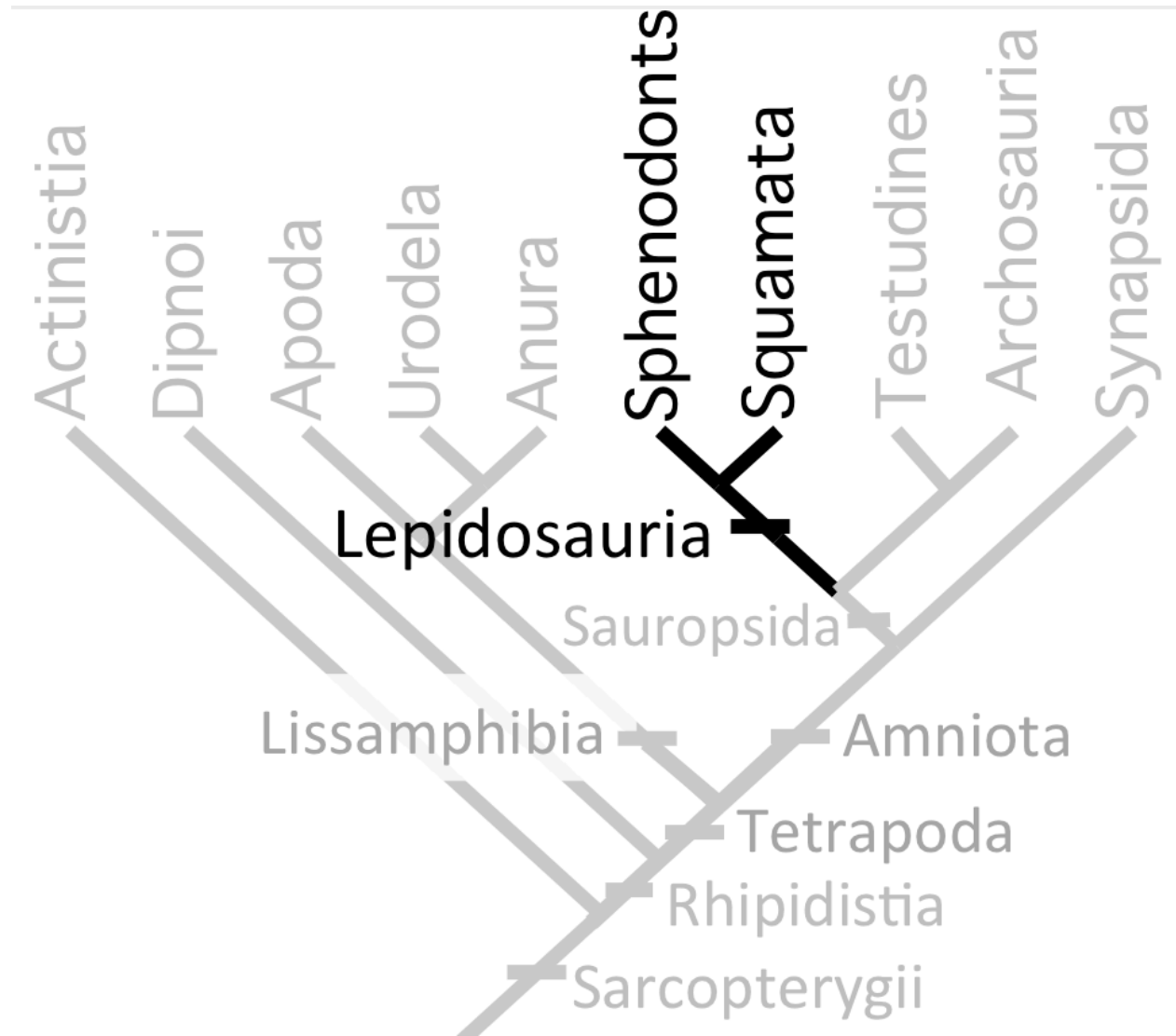
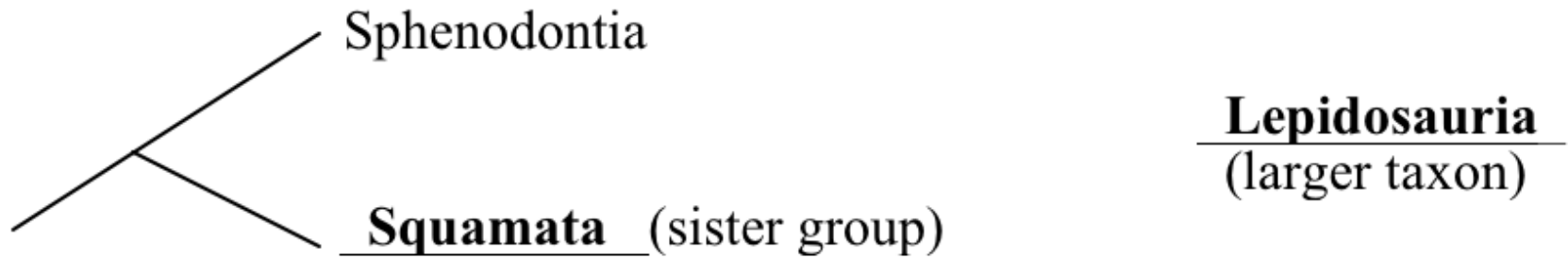
Tree Quiz 2 Key



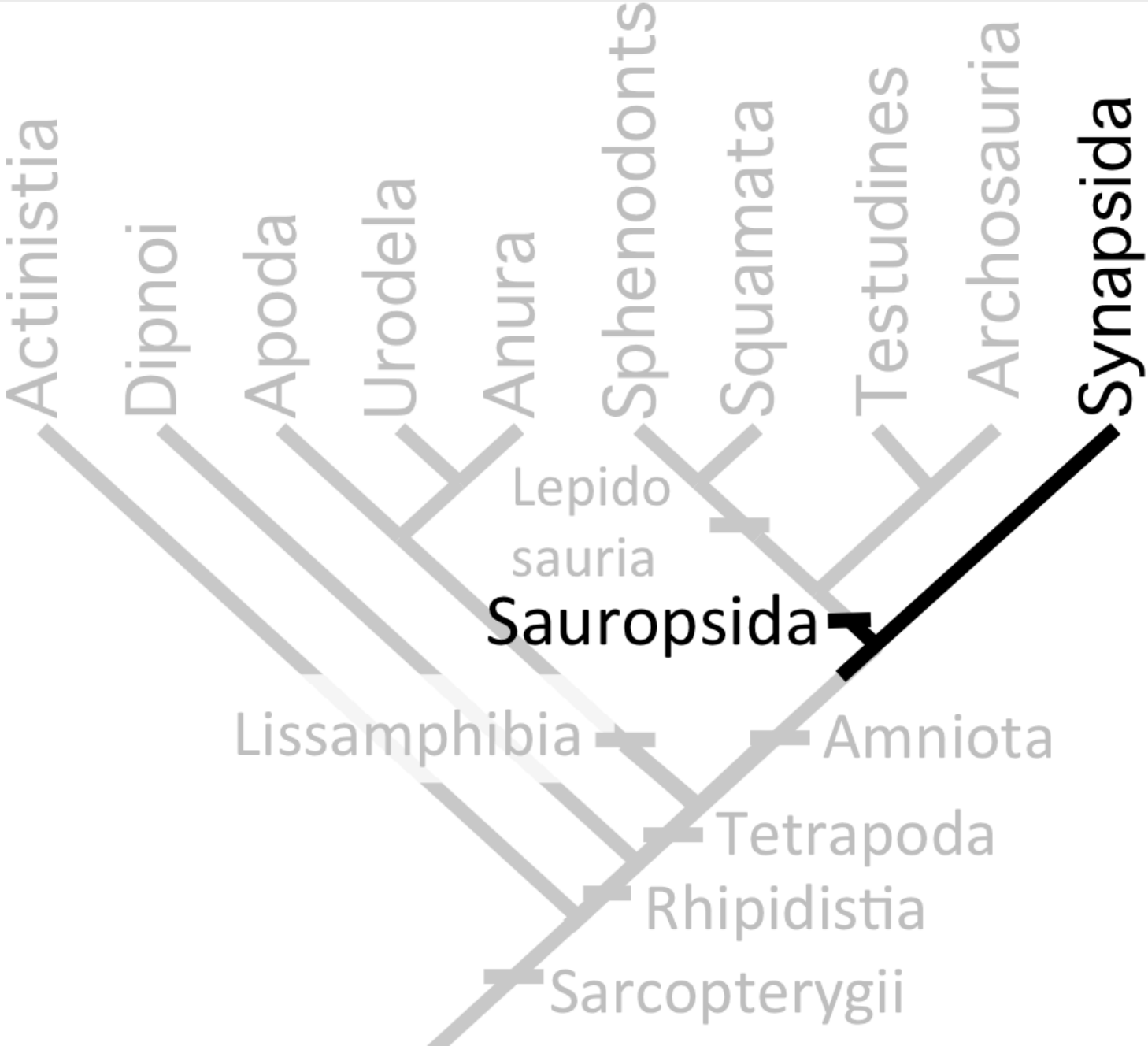
1.



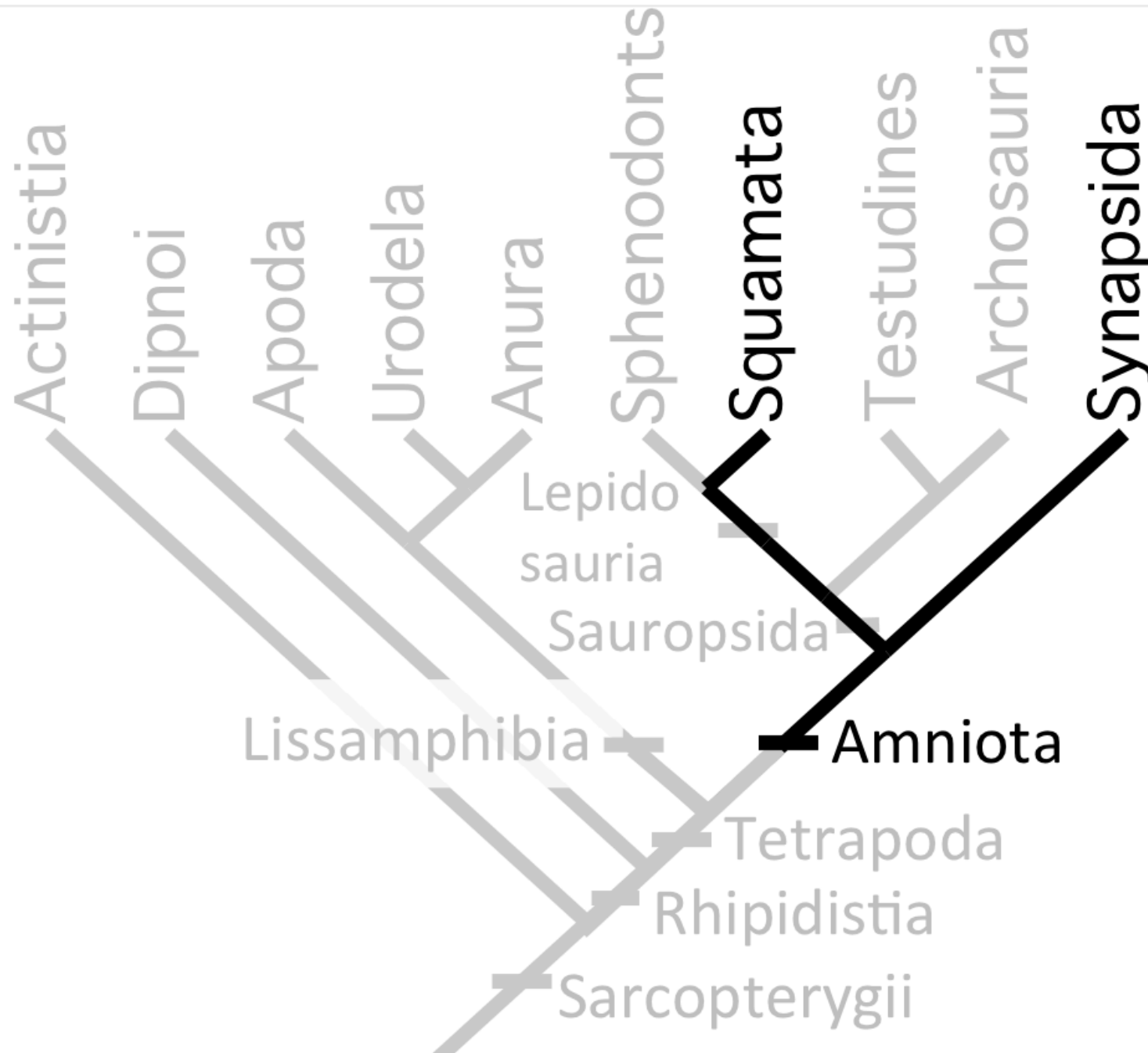
2.



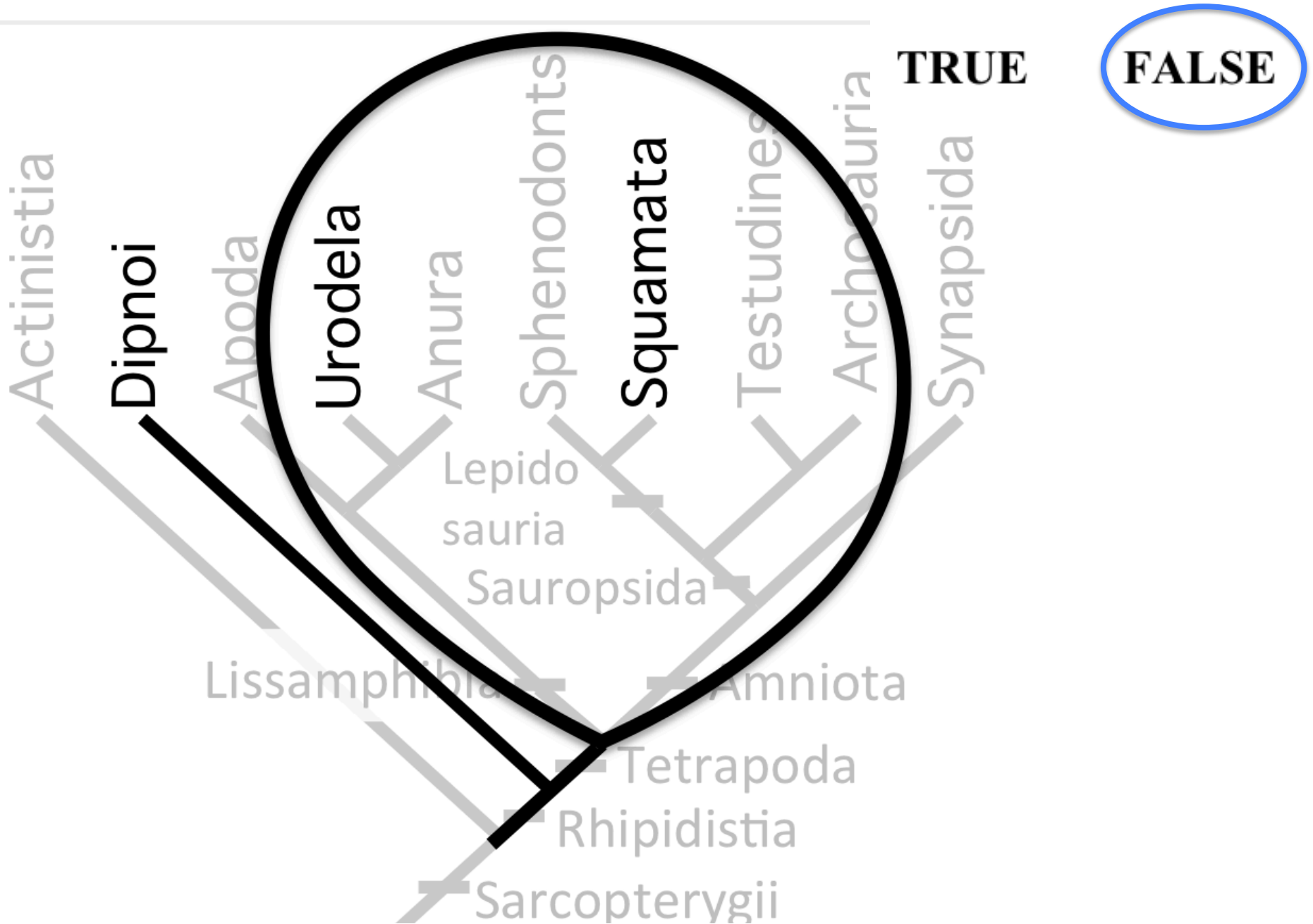
3. The sister group of the Synapsida is the Sauropsida



4. The smallest taxon that includes both mammals and lizards is the Amniota



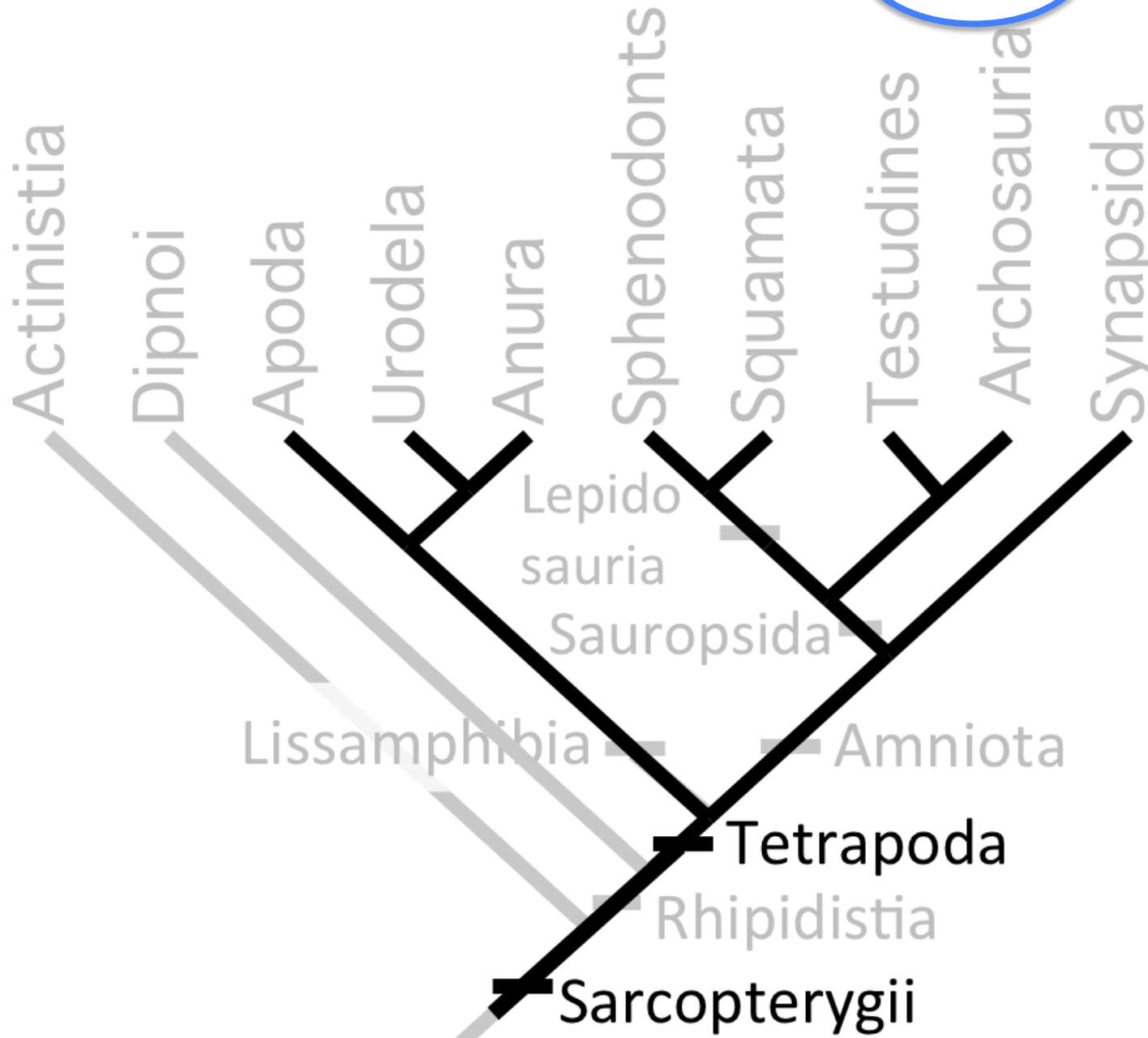
5. Lungfish are more closely related to salamanders than they are to snakes.



6. Tetrapods are lobe-finned fish.

TRUE

FALSE



7. Draw a tree showing the relationships of the three groups of living amphibians. You may use common or scientific names.(1 pt)

