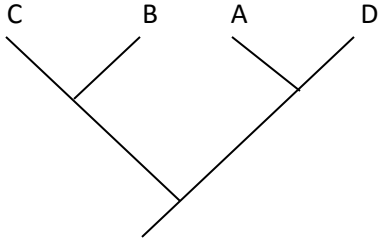
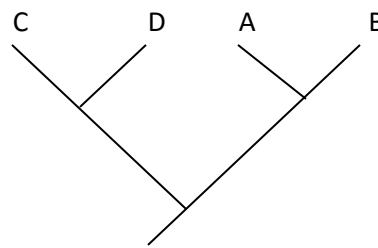


1. Answer the following questions based on tree #1 and #2.
 - a. Are the trees below representing the same relationship?
 - b. In tree 1 does C and B form a monophyletic group? What about in tree 2?
 - c. In tree 1 what is the sister group to A?

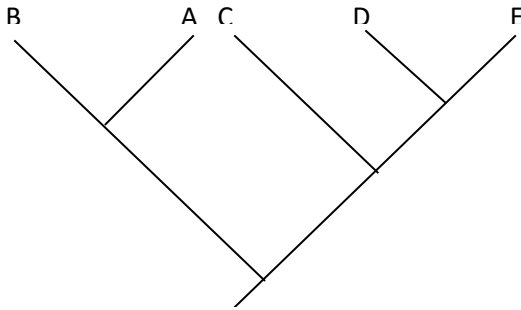


#1

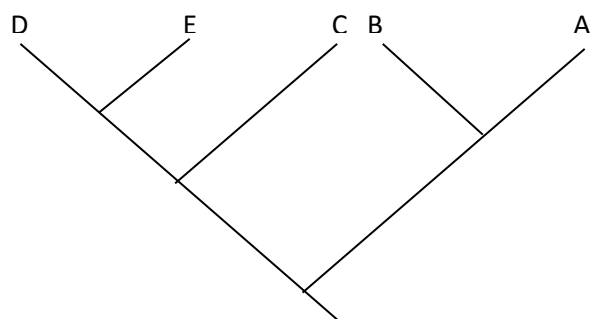


#2

2. Answer the following questions based on tree #3 and #4.
 - a. Are the trees below representing the same relationship?
 - b. What is the sister group to C in each tree?

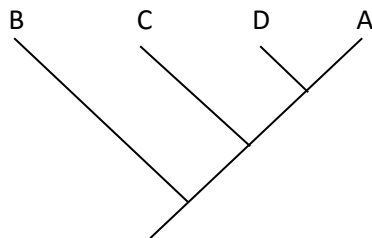


#3

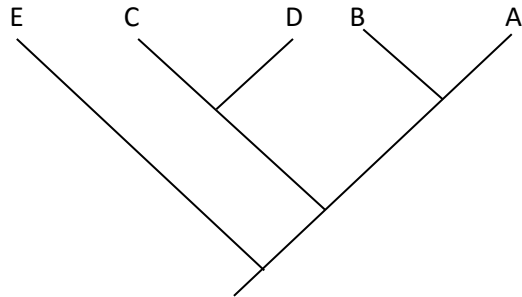


#4

3. In the tree below what is the sister group to A? What is the sister group to B? Do B, C, A form a monophyletic group?



4. How many monophyletic clades are in the following tree? How else could you draw this tree without changing the relationships?



5. What is the sister group to E? What about to H?
- How many monophyletic clades are there in this tree?
 - Would switching the positions of H and G change the relationships within the tree?
 - Would switching the positions of C and D change the relationships within the tree?

