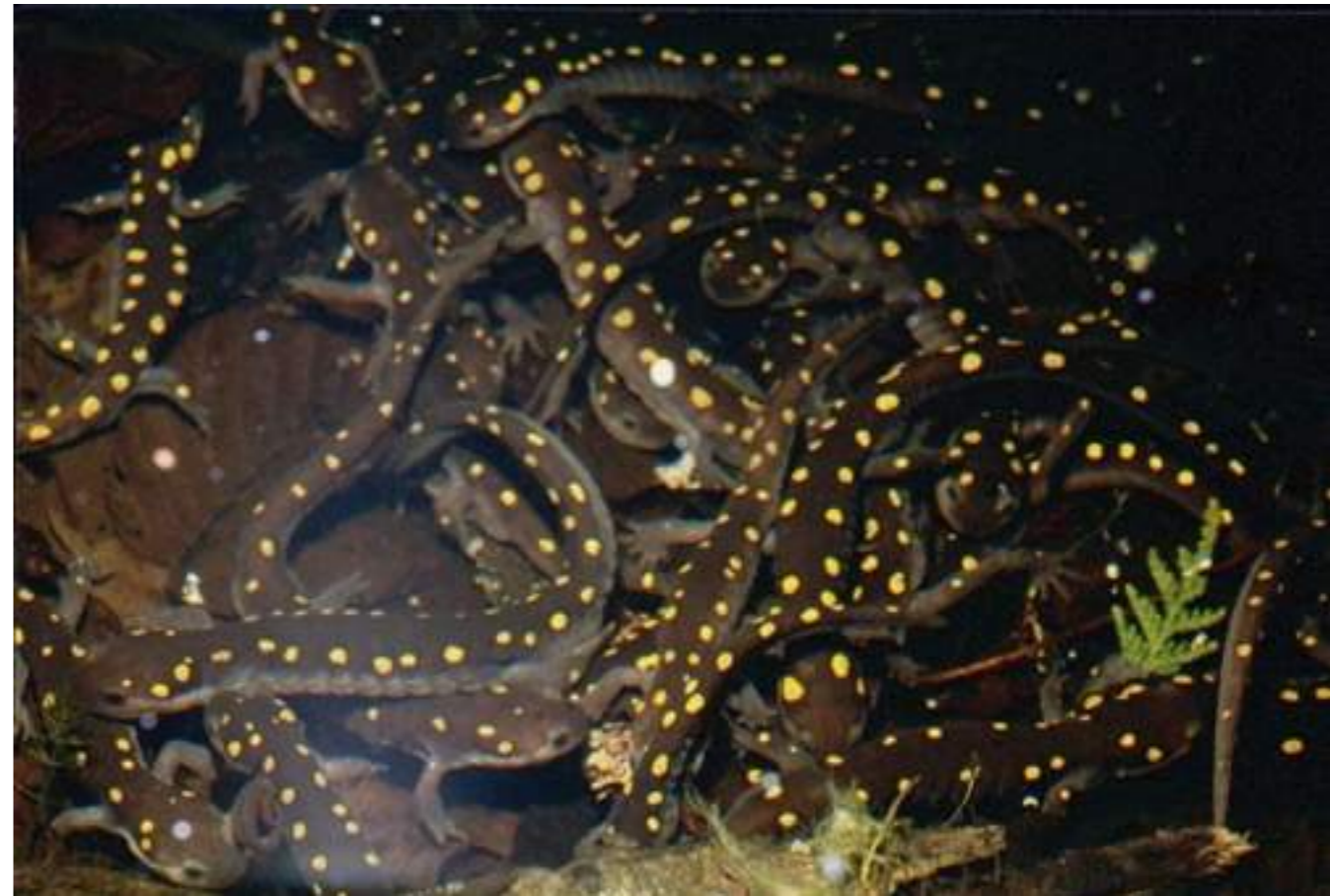


Social Behavior and Reproduction (Reptiles)



Announcements

- Back to UConn forest today
 - (same location as Day 1)
- Presentation slot sign-ups
- Tomorrow's optional trip sign-ups
- Data analysis examples

Reptiles

- Social behavior is primarily mating
- The turtles basking together?
- Not buddies, just a good place to be



Turtles

- Some turtles do exhibit some forms of territoriality
 - *C. serpentina*



Turtles

- Male wood turtles will fight for position
- Larger males end with more matings



Turtles



- All turtles lay eggs in nest
- Nesting turtles often travel away from their home habitat.

Chrysemys picta

- Nest in sandy areas
- Often killed crossing roads



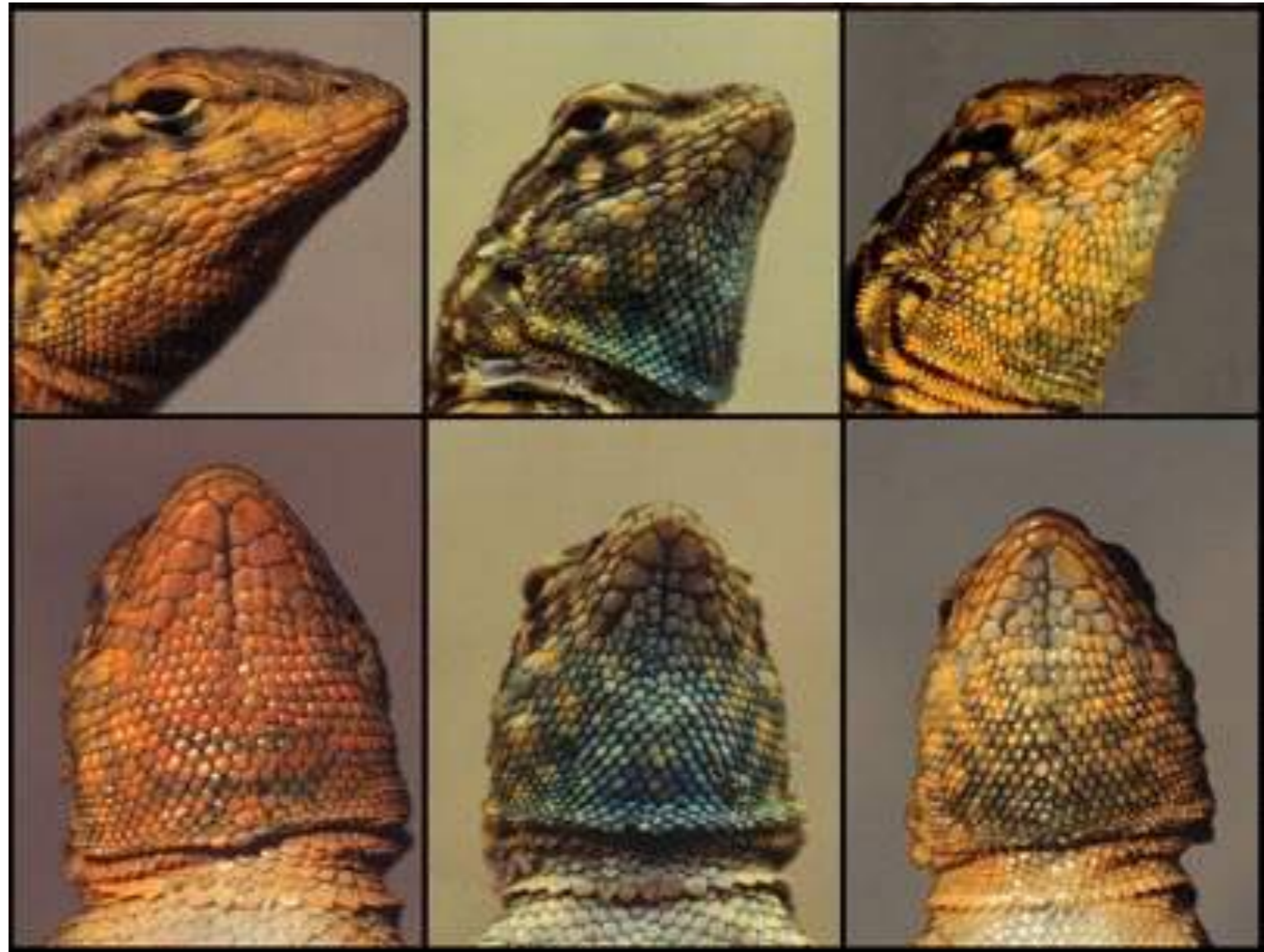
Turtles

- Our other local turtles bury their eggs in various locations, typically softer soils



Lizards

- Lizards have a diverse array of social behaviors and mating strategies
 - Male/male combat
 - Territories
 - Displays



Plestiodon



- Large males develop territories in prime display habitats

Plestiodon

- Eggs are laid under logs



Snakes

- Snakes are also known for a variety of mating strategies and behaviors

COBRA FIGHT!!!!

Garter Snakes

- *Thamnophis* in Canada are famous for the large “[mating balls](#)”.



Colubridae

- Our colubrid snakes, *Thamnophis sirtalis*, *Nerodia sipedon*, *Coluber constrictor*, *Storeria dekayi*, and *Diadophis punctatus* all mate soon after emerging from the hibernacula.
- *Coluber* and [*Nerodia*](#) are the easiest to observe

Agkistrodon

- Females emerge first from the hibernacula, begin feeding right away
- Males emerge some time later, then search out and find the females

