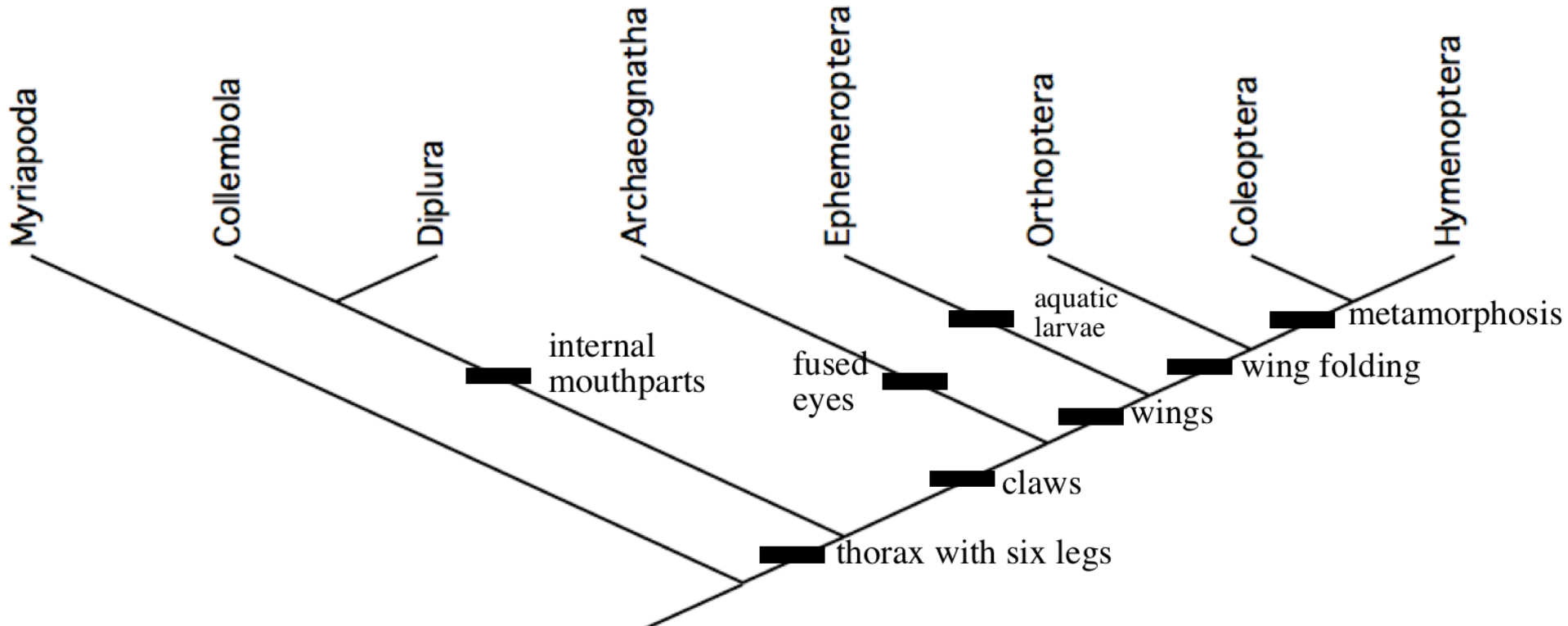


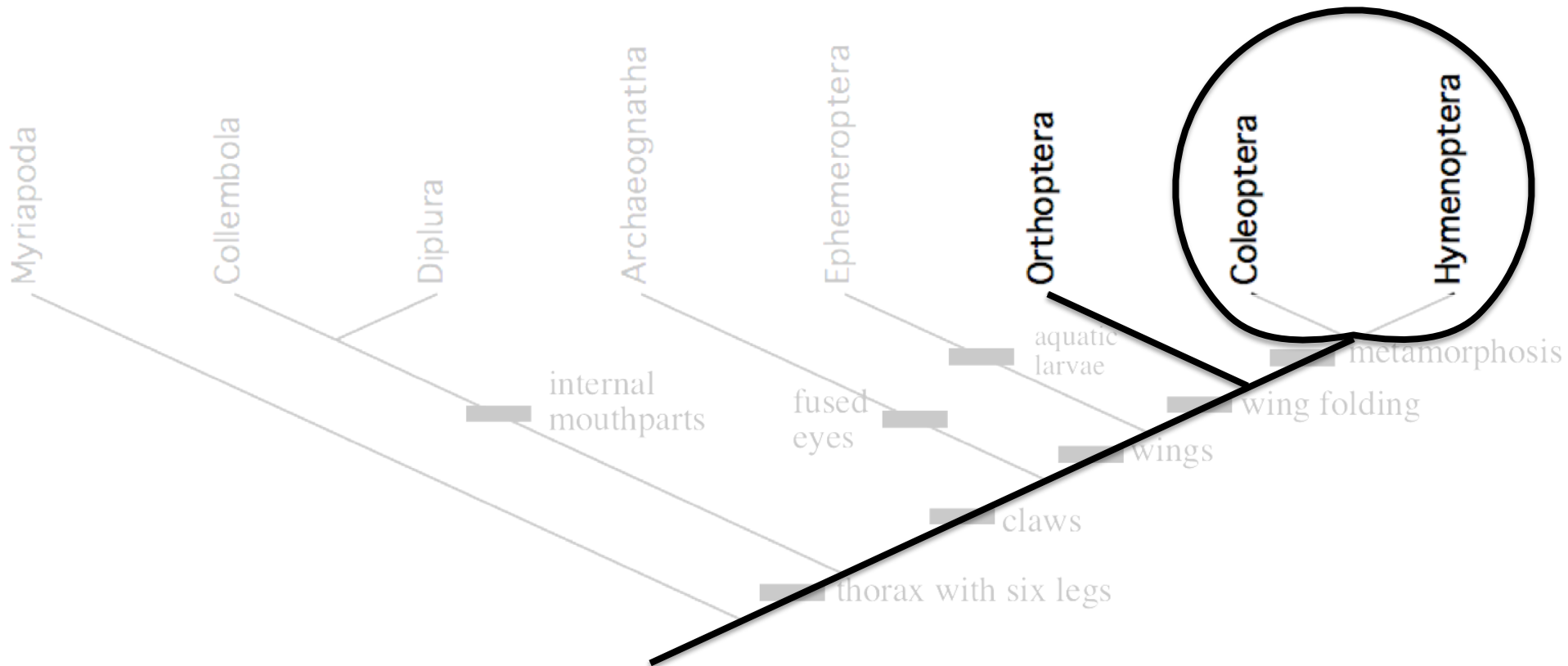
Tree Quiz 1 Key - Part 1



Use the tree above to answer the following questions. Labels along branches indicate traits that originated along that branch.

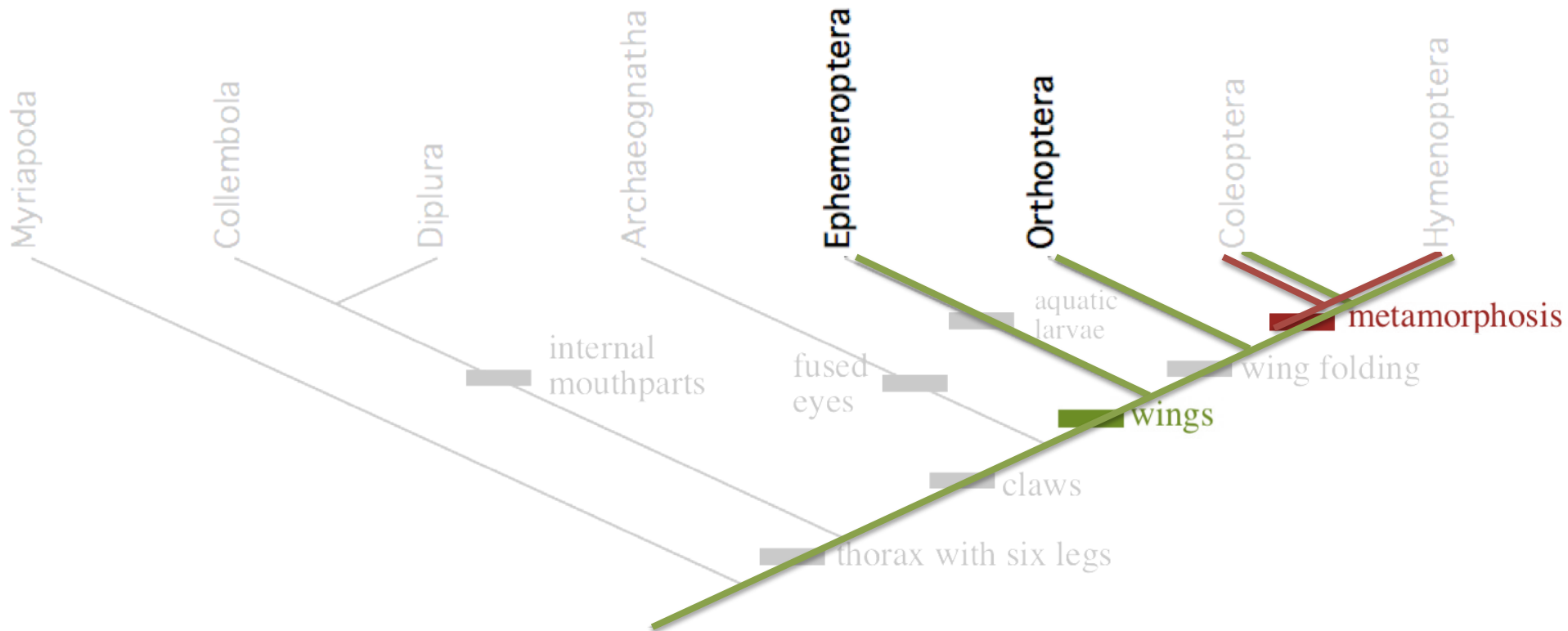
Question 1

1) The sister group to Orthoptera is [The group containing both Coleoptera and Hymenoptera](#)



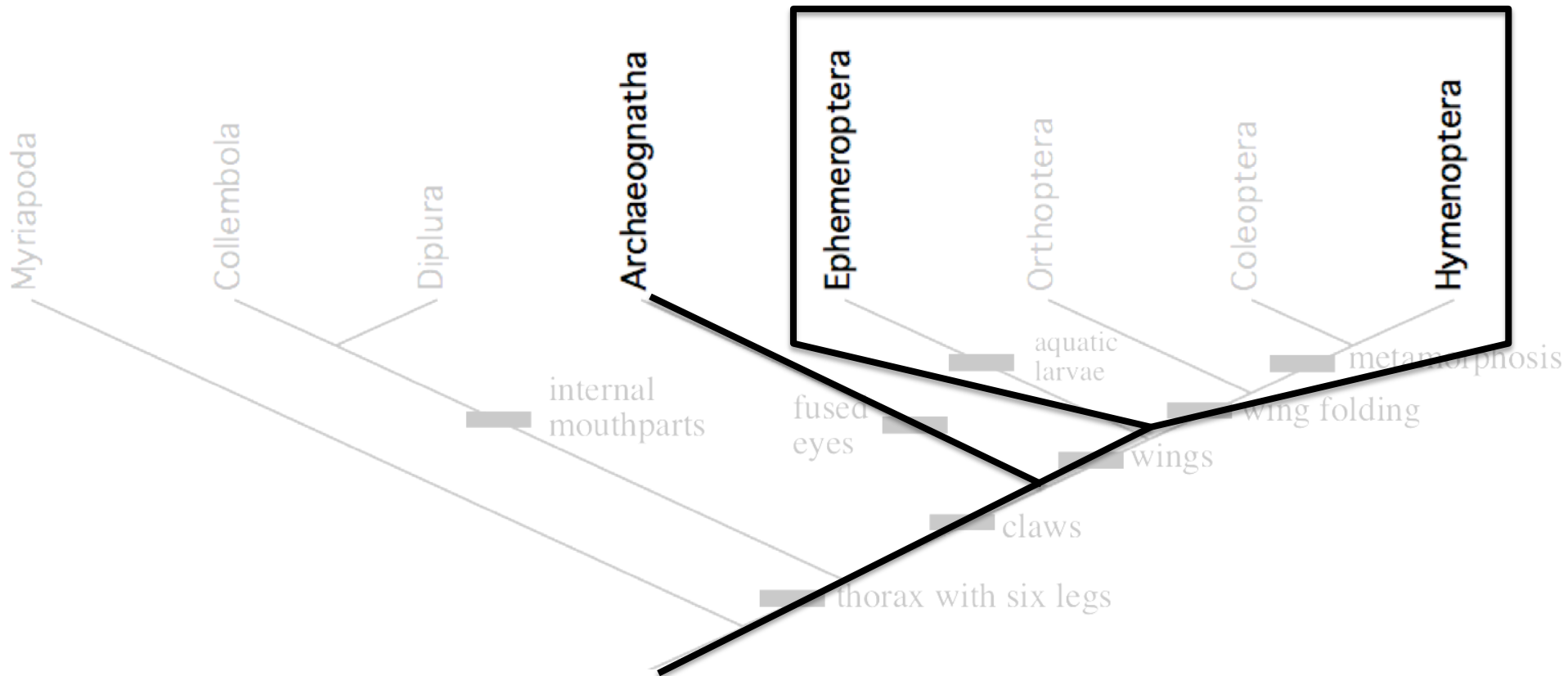
Question 2

- 2) Two taxa that have wings, but do not metamorphose, are Ephemeroptera and Orthoptera



Question 3

- 3) Archaeognatha is more closely related to Ephemeroptera than it is to Hymenoptera. TRUE FALSE

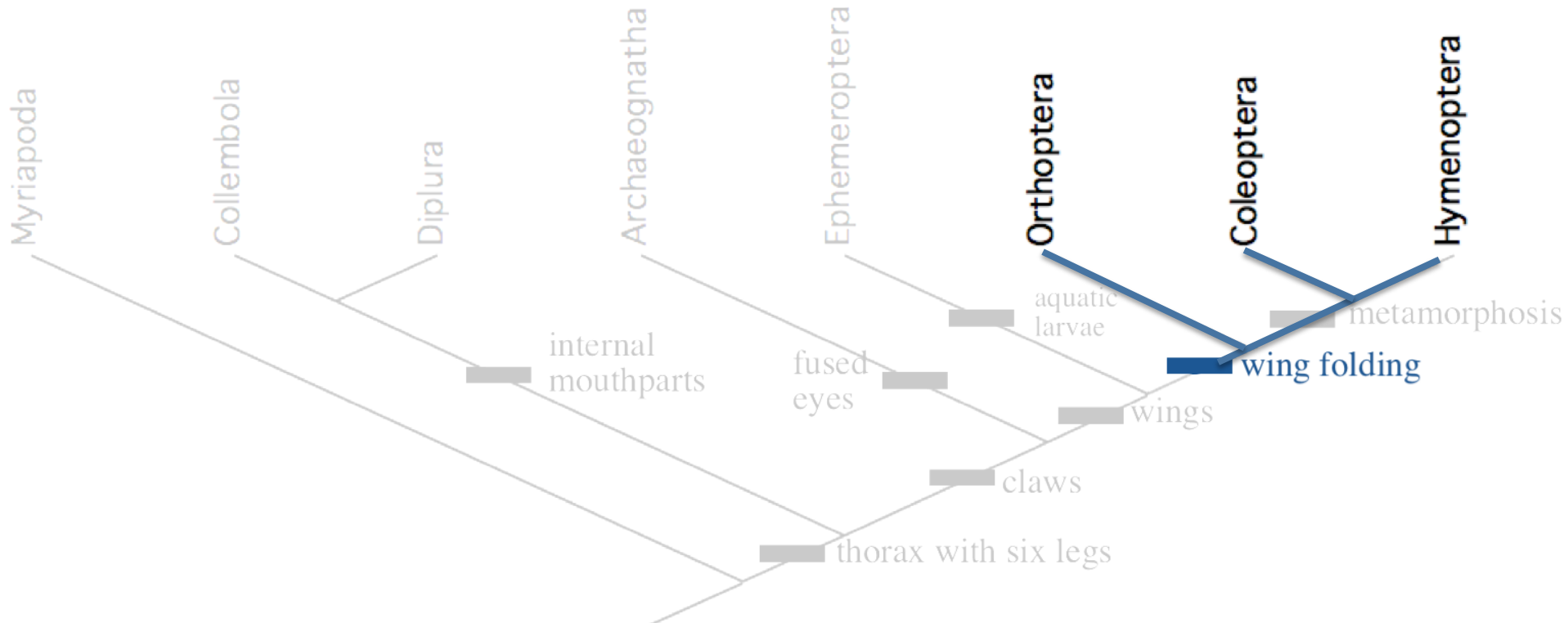


Question 4

4) Wing folding is a synapomorphy for Orthoptera.

TRUE

FALSE

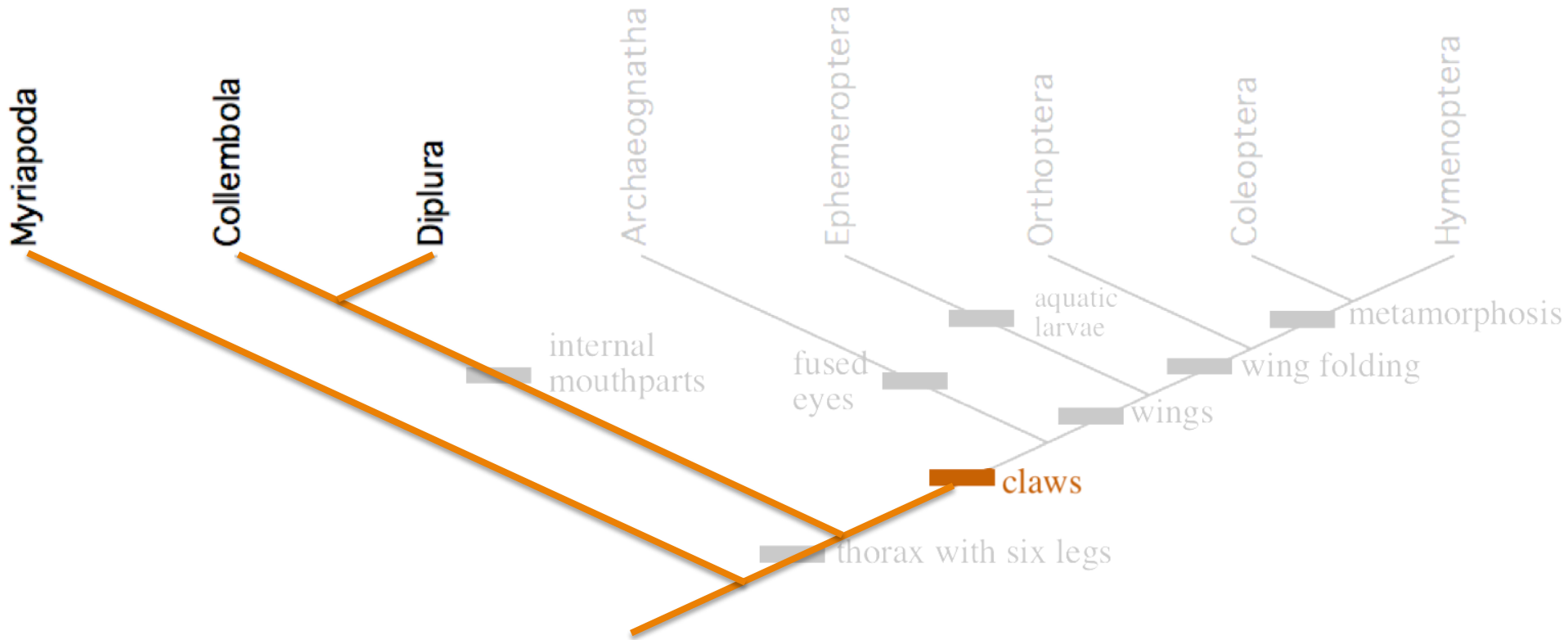


Question 5

5) Taxa without claws form a monophyletic group.

TRUE

FALSE



Tree Quiz 1 Key - Part 2

Draw a tree showing the relationships of these five Deuterostome taxa.

Cephalochordata, Chondrichthyes, Echinodermata, Petromyzontoidea, Xenoturbellida

