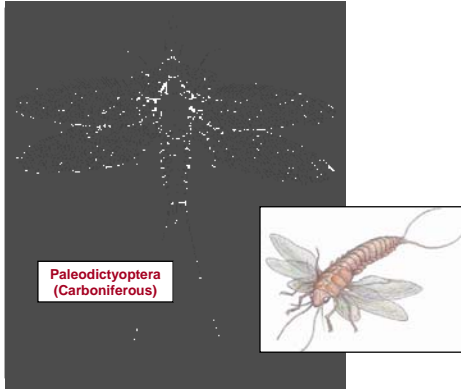
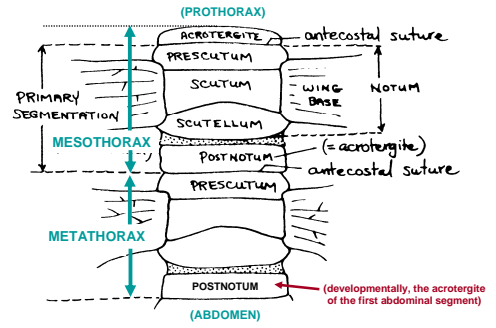


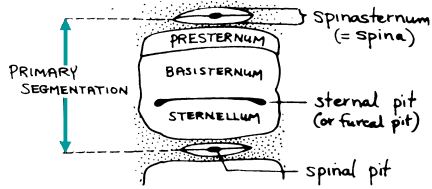
**The Pterothorax**



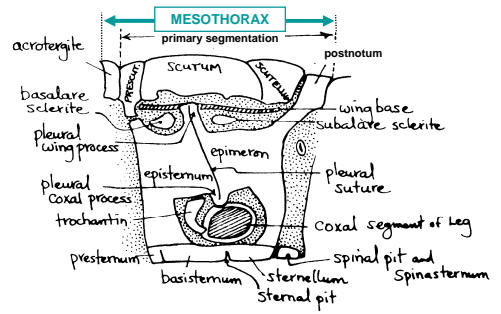
**Tergum: basic Pterygota**



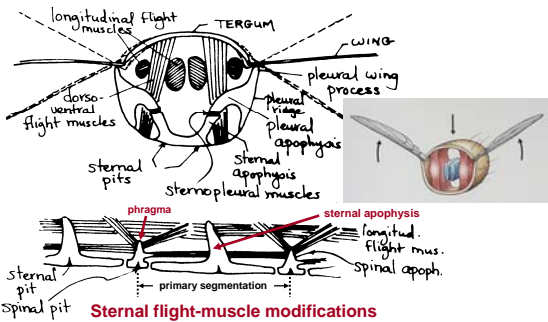
**Sternum: basic Pterygota**



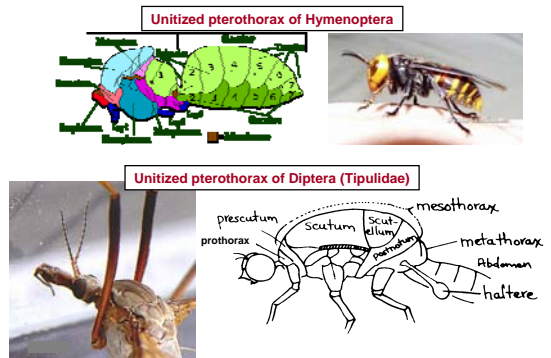
**Pleuron: basic Pterygota**



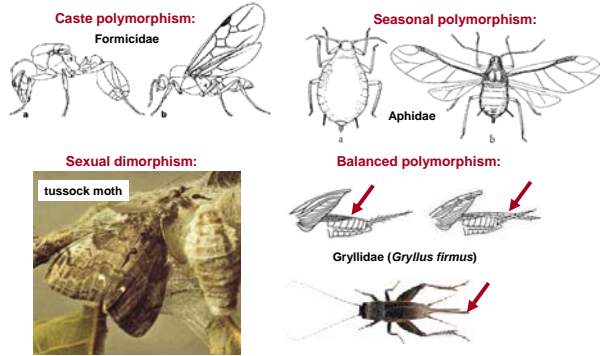
**Cross-section of pterothorax**



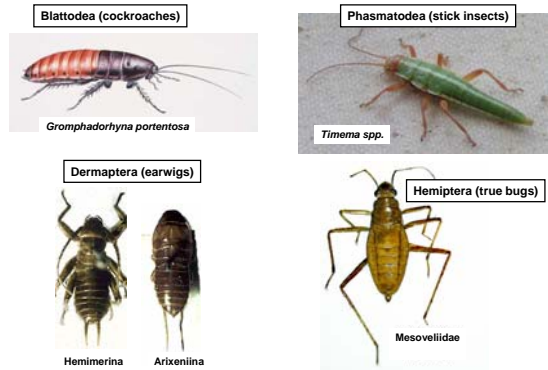
**Fusion of pterothoracic components**



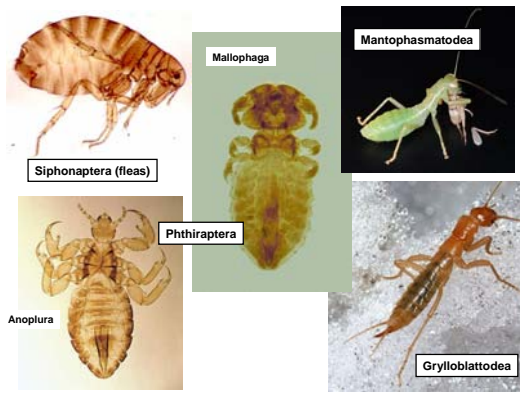
**Thoracic changes due to secondary aptery**



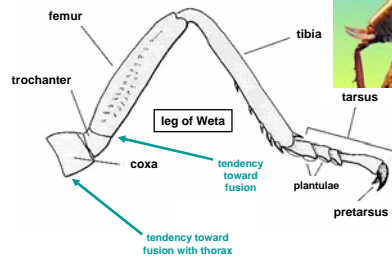
**Secondary aptery within orders**



**Secondary aptery of an entire order**



**The insect leg (generalized Orthoptera)**



**The insect foot (pretarsus)**

