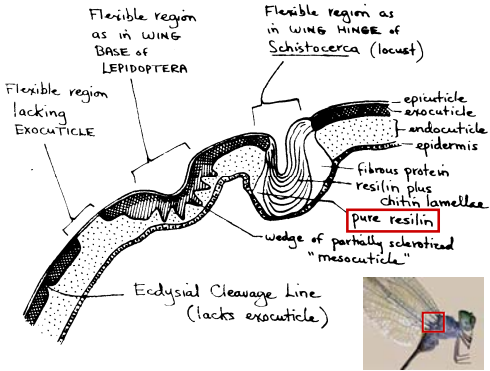
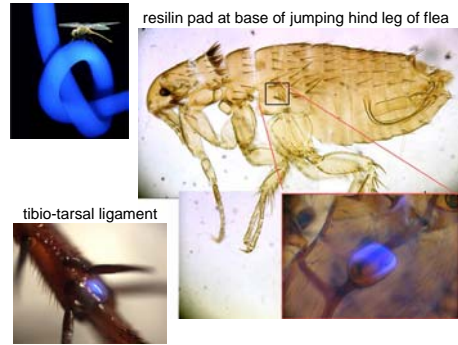


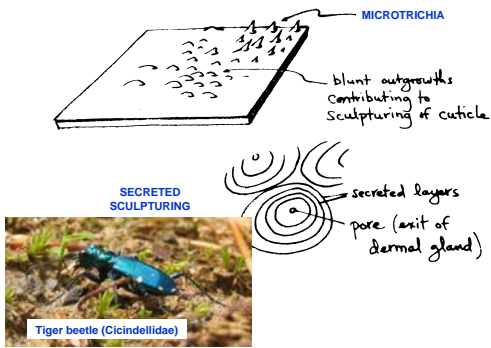
Flexibility as a property of the cuticle



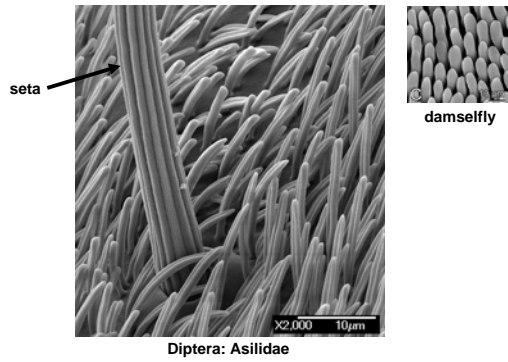
The rubbery protein resilin



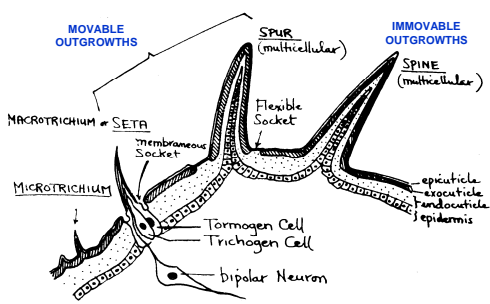
Derivatives of the integument I: Small immovable outgrowths



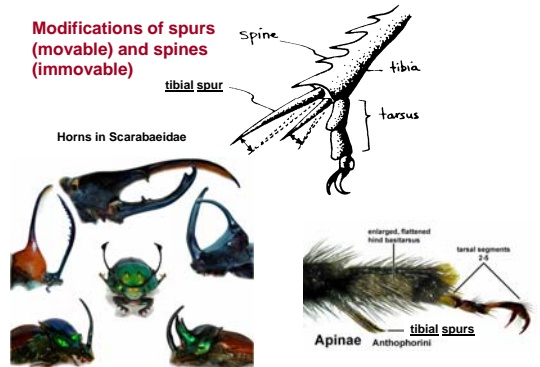
Two examples of microtrichia



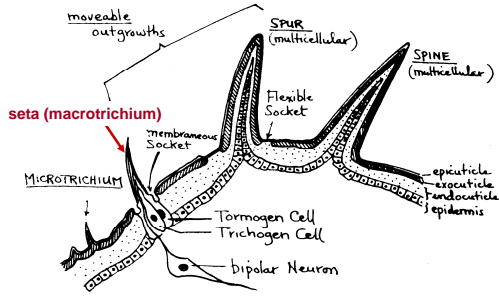
Derivatives of the integument II & III: Large immovable outgrowths; movable outgrowths



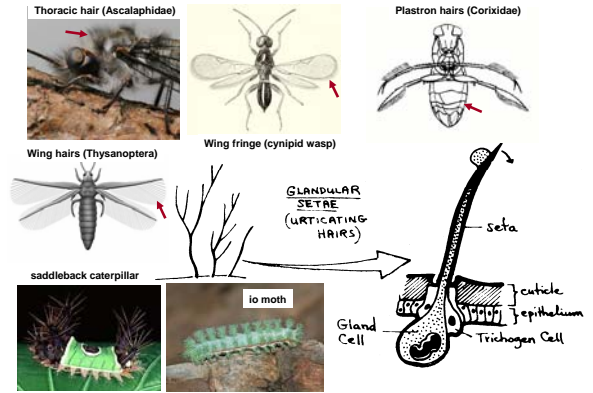
Modifications of spurs (movable) and spines (immovable)



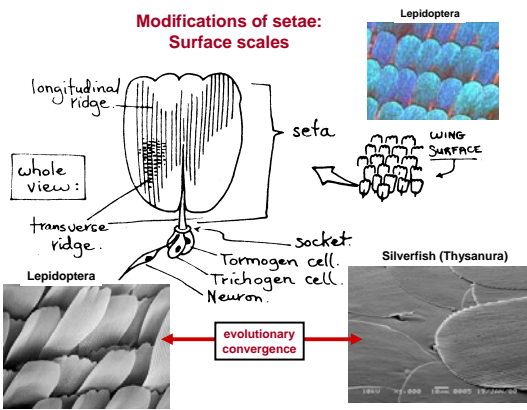
Setae or "hairs"



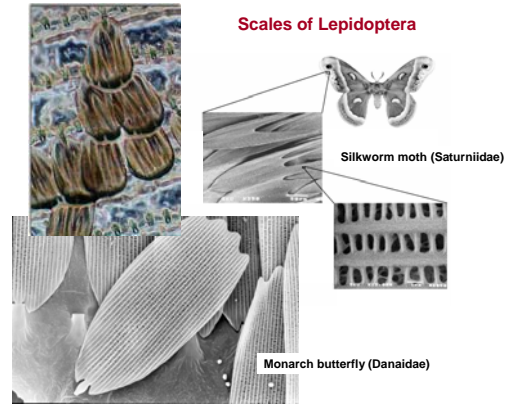
Modifications of setae (macrotrichia)



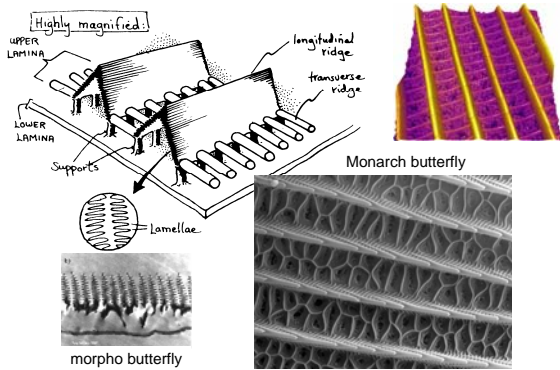
Modifications of setae: Surface scales



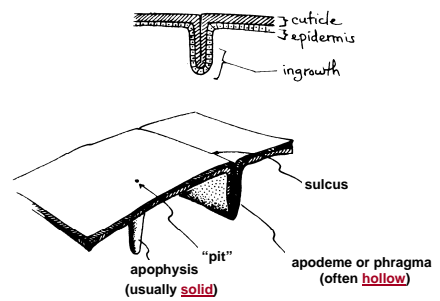
Scales of Lepidoptera



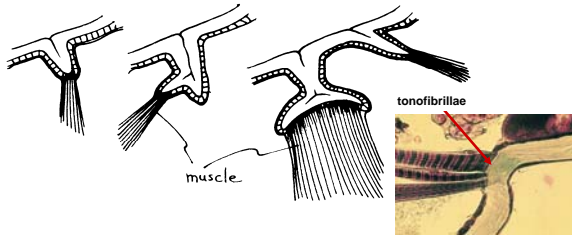
Ultrastructure of Lepidoptera scales



Derivatives of the integument IV: Ingrowths



Integumental ingrowths serve as points for muscle attachments

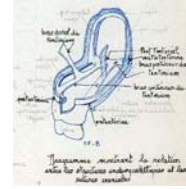


... but also for structural support of parts of the body (the endophragmal skeleton)

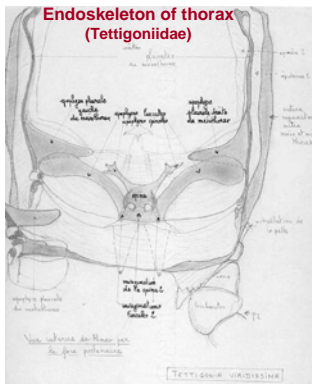
Endoskeleton of head: the tentorium



Psocoptera



Orthoptera



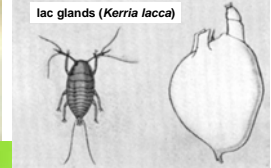
Derivatives of the integument V: Glands



wax glands



lac glands (Kerria lacca)



...also exuvial glands and urticating glands.

