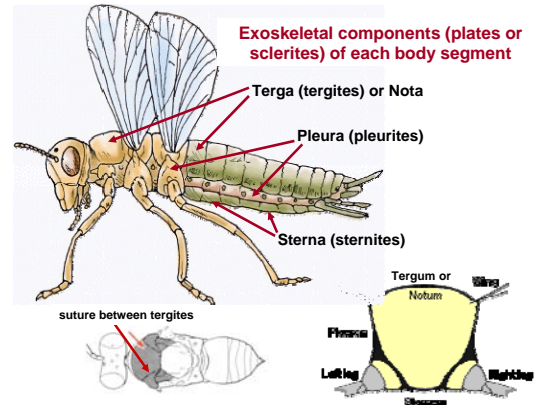
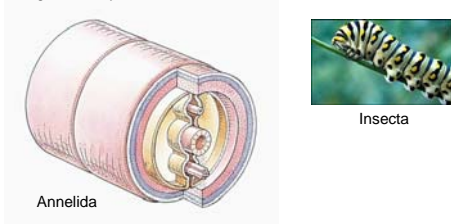


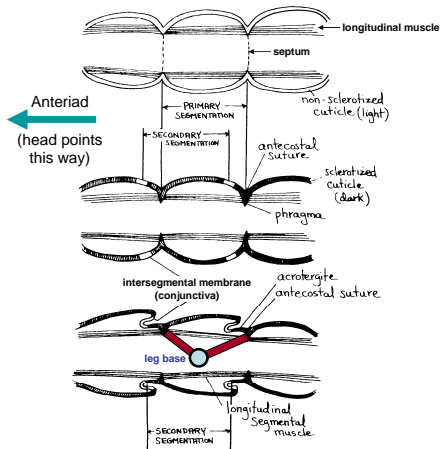
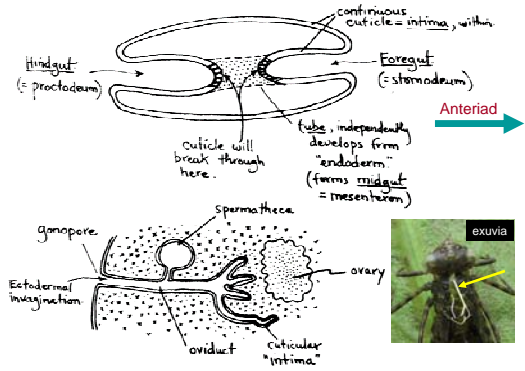
**The integument and its derivatives**

An early "skeleton:" the **hydrostatic skeleton**

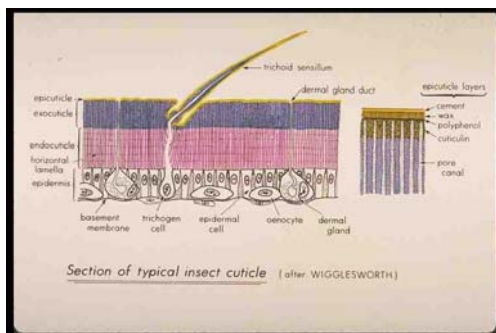
A volume of incompressible fluid that transmits forces and pressures from muscular contraction through the body.



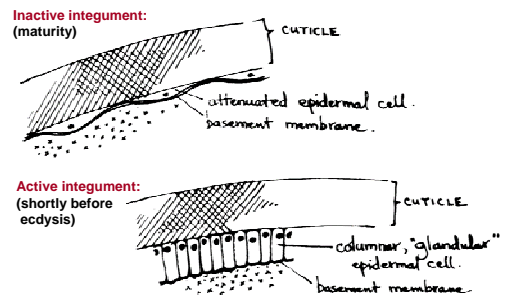
**Formation of alimentary tract, female reproductive system, and tracheal system from ectodermal integument**



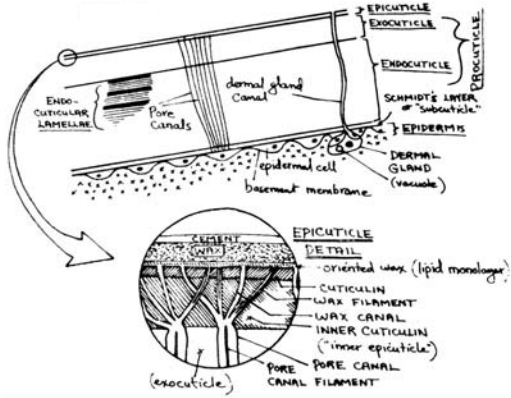
**The insect integument (epidermis plus cuticle)**



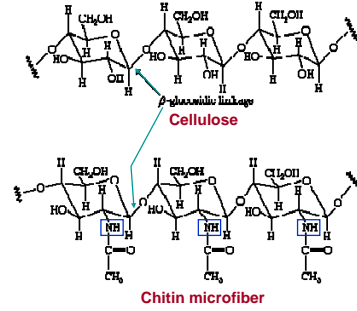
**Epidermal differences between inactive and active integument**



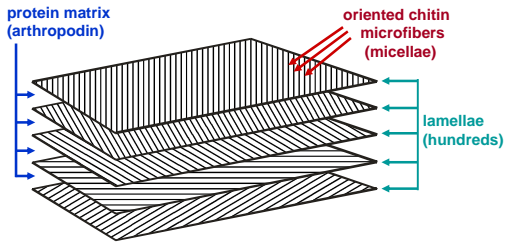
**Mature, inactive integument:**



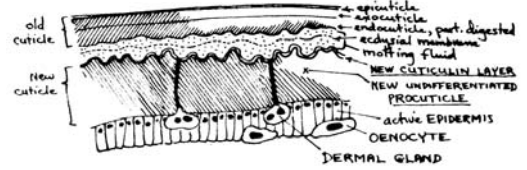
**Chitin is a major component of the procuticle**



**Procuticle = exocuticle (tanned) plus endocuticle (untanned)**



**Integument late in the molting cycle (during apolysis):**



**Ecdysis (molting)**

