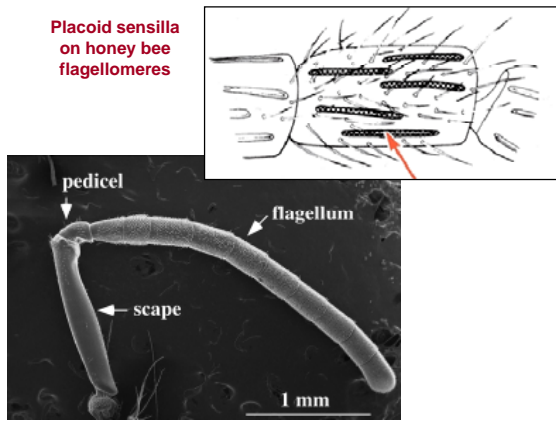
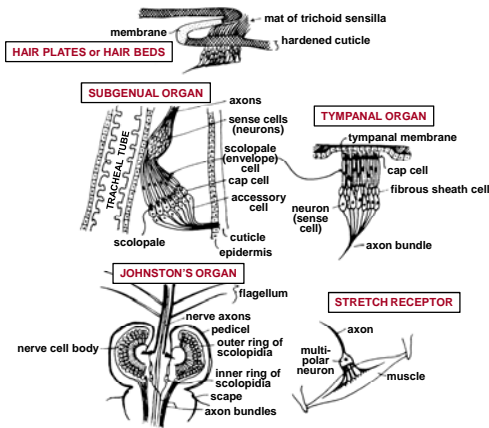
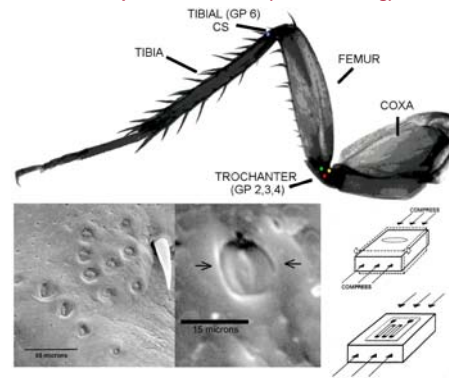


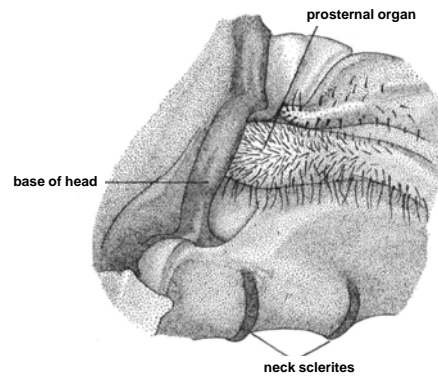
**Placoid sensilla on honey bee flagellomeres**



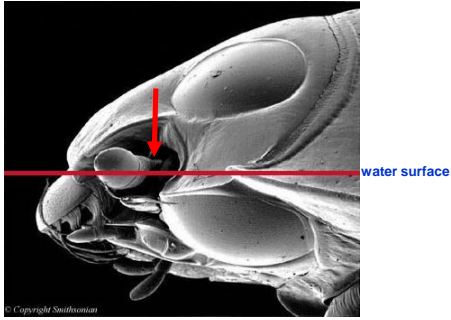
**Campaniform sensilla (cockroach leg)**



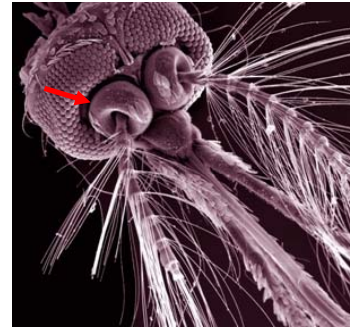
**Hair plates: left prosternal organ in a mantis**



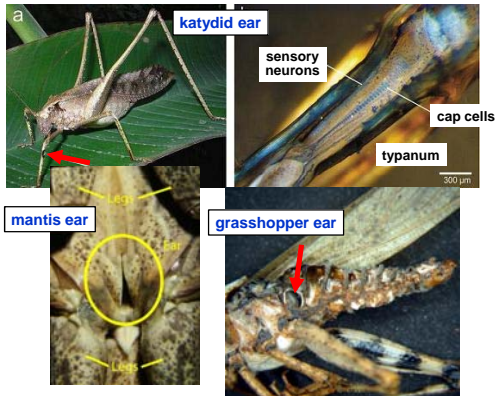
Johnston's organ – whirligig beetles (Coleoptera: Gyridae)



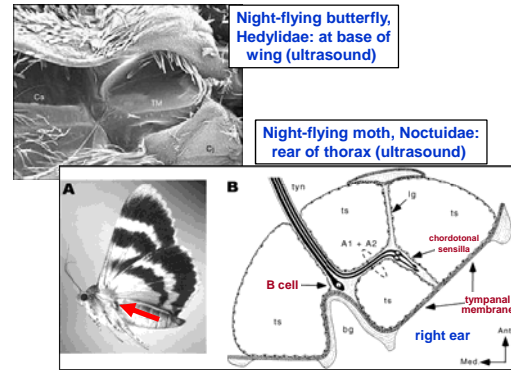
Johnston's organ – mosquitoes (Diptera: Culicidae)



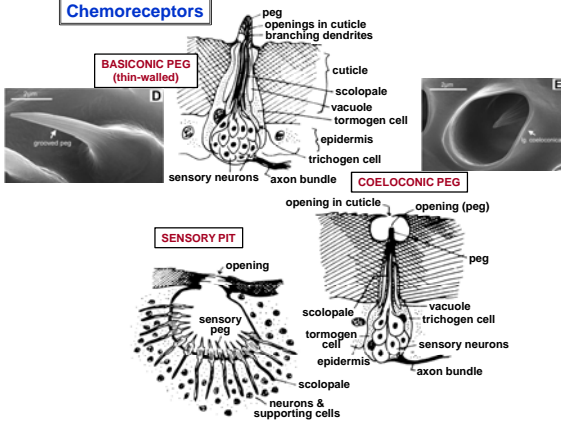
Tympanal organs



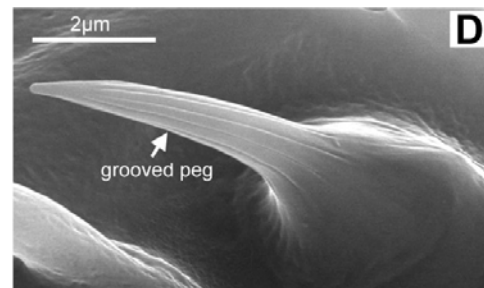
More tympanal organs



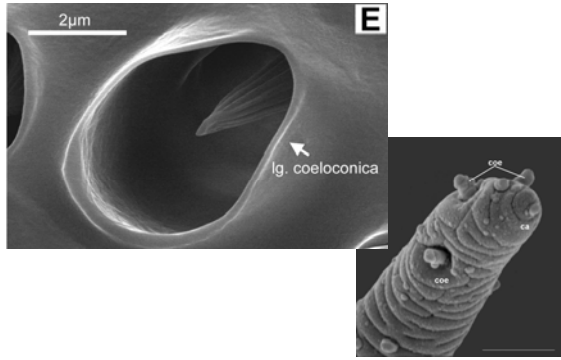
Chemoreceptors



Basiconic peg from *Anopheles* mosquito antenna



Coeloconic peg from *Anopheles* mosquito antenna



Male moth antennae: the gold standard for olfaction



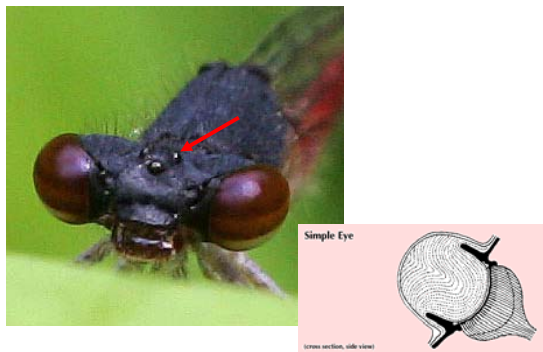
Trail-following in ants: another olfactory tour-de-force



The insect visual sense



Dorsal (true) ocelli – damselfly (Odonata: Zygoptera)



Simple eyes: stemmata ("lateral ocelli") – larvae of Lepidoptera

