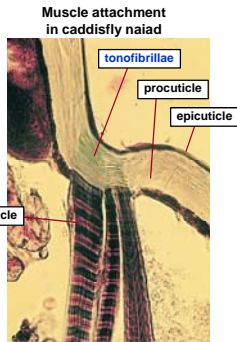
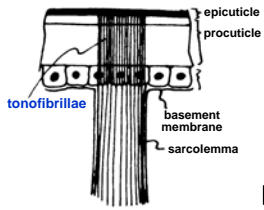
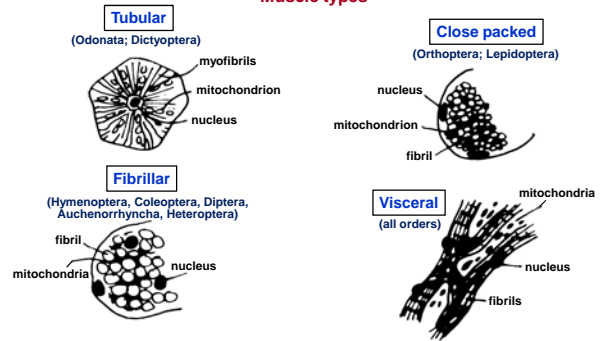


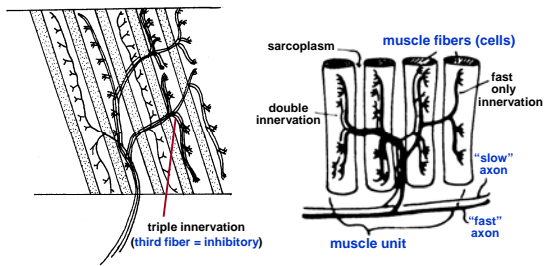
**Muscle attachments**



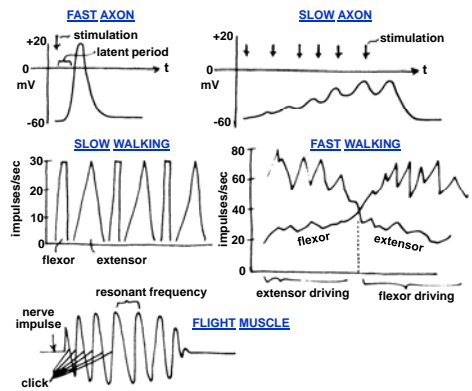
**Muscle types**



**Muscle innervation – single, double, & triple**



**Nerve action potentials**



**"Slower" wing-beat frequencies (Odonata & Lepidoptera)**



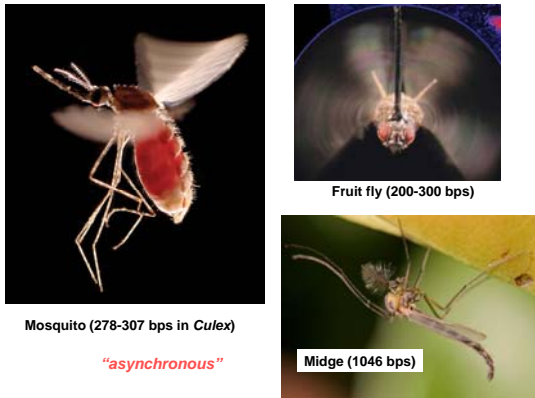
*"synchronous muscle"*

**Faster wing-beat frequencies (Hymenoptera)**



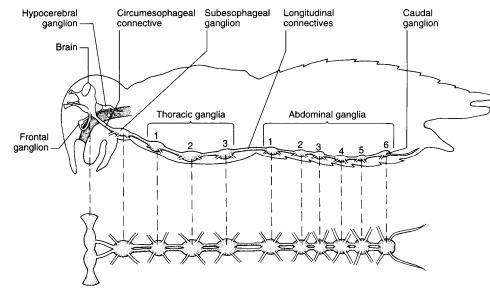
*"asynchronous muscle"*

**Fastest wing-beat frequencies (Diptera)**

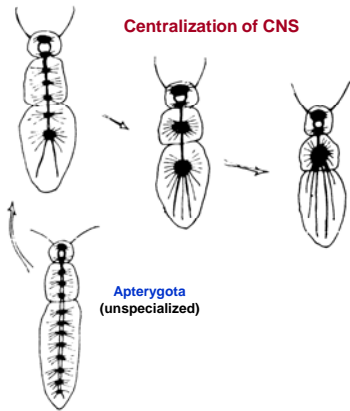


*"asynchronous"*

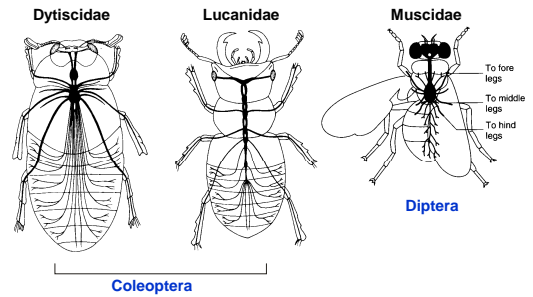
**Generalized insect nervous system**



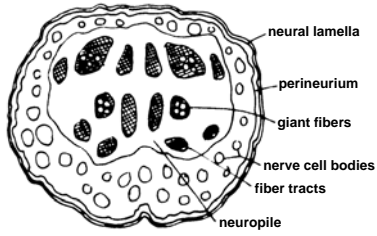
**Centralization of CNS**



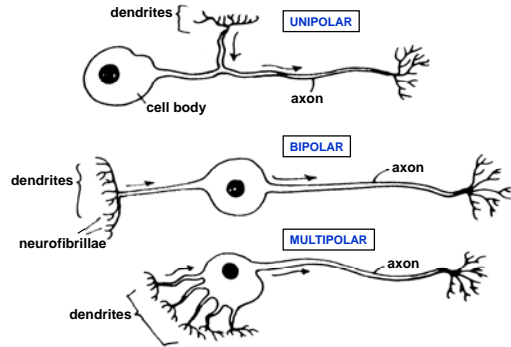
**Examples of consolidated CNS's**



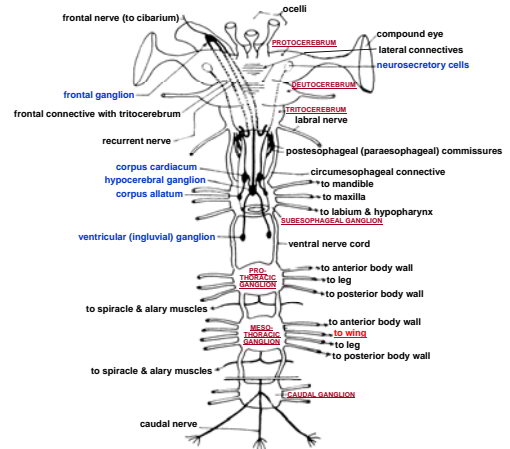
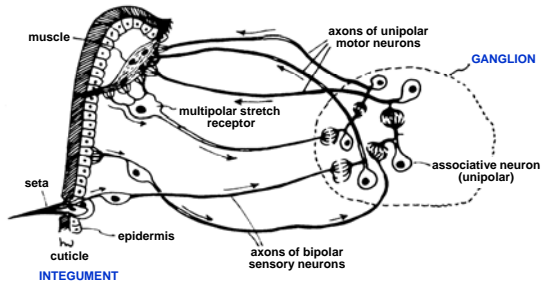
**Brain or ganglion, cross-section**



**Types of neurons**



**Nerve connections**



**Brain & stomodeal nervous system**

