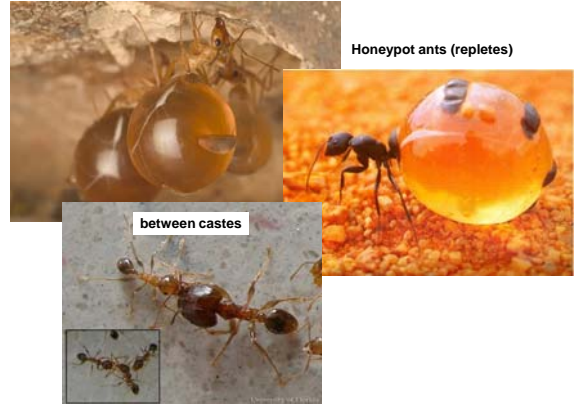


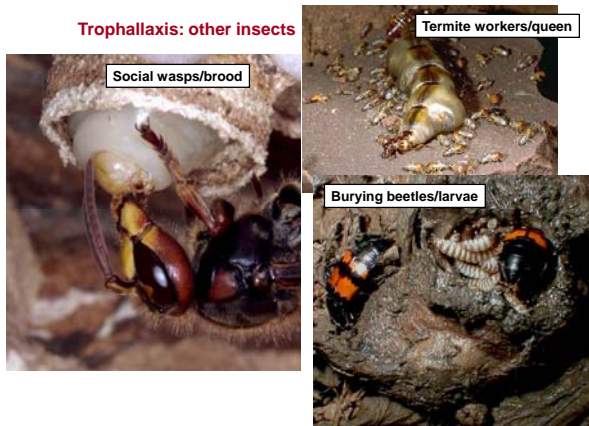
Variations on the theme of Digestion



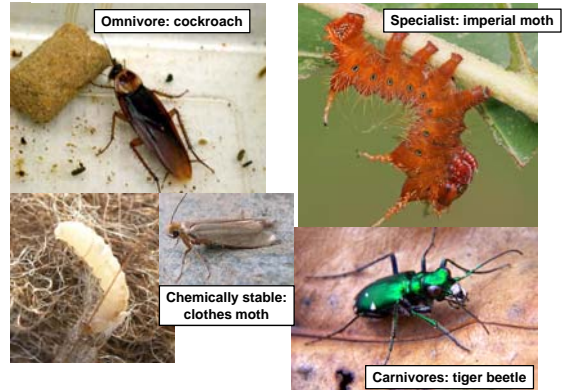
Trophallaxis: ants (Hymenoptera: Formicidae)



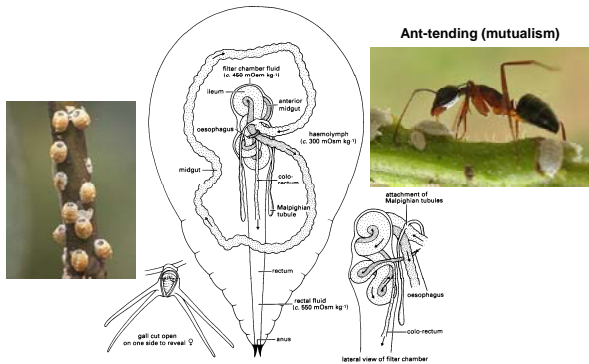
Trophallaxis: other insects



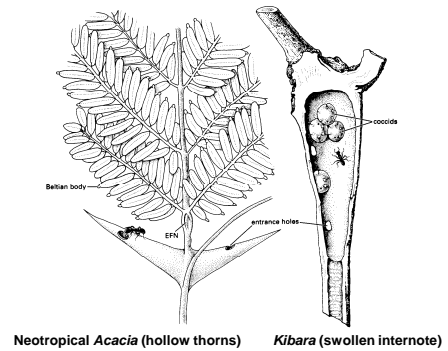
Speed of digestion: effect of dietary class



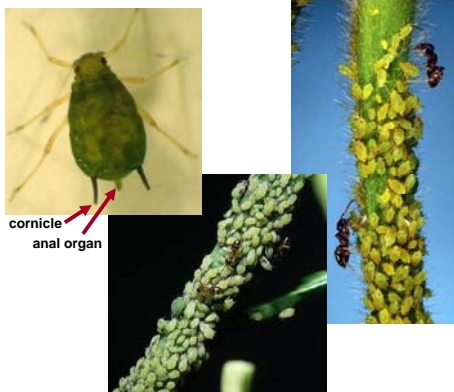
Filter chamber of Sternorrhynca (Coccidae & Aphidae)



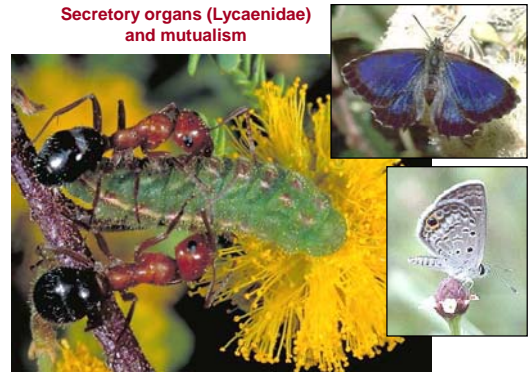
Mutualism: Plants, Ants, and Scale insects



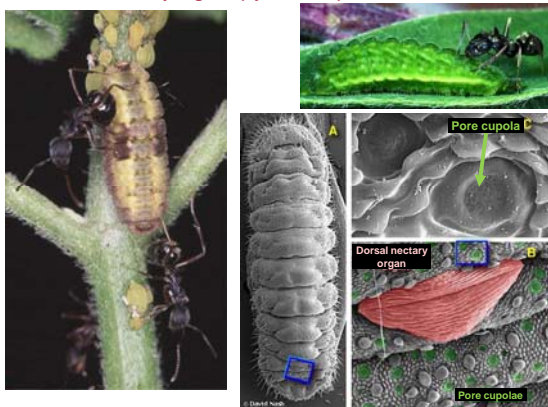
Secretory cornicles (Aphidae) and mutualism



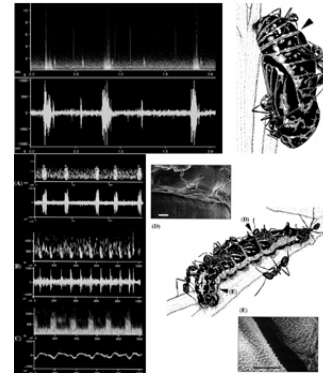
Secretory organs (Lycaenidae) and mutualism



Secretory organs (Lycaenidae) and mutualism



Sounds (vibrations) attract ants to tend caterpillars



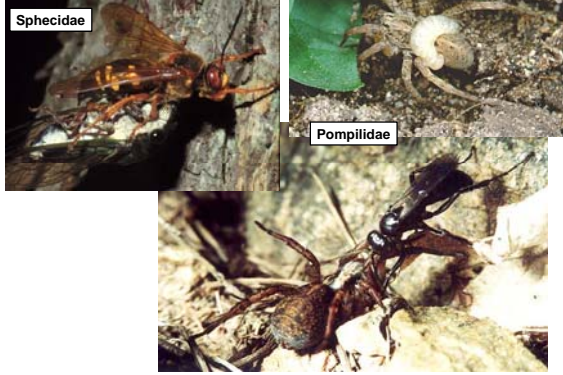
Excretory products (Membracidae) and mutualism



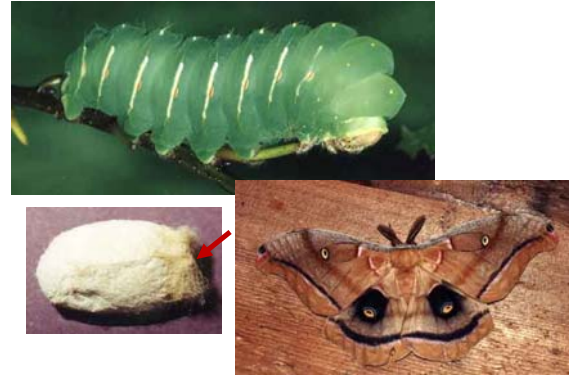
Extra-oral digestion: Ex. = syrphid fly larva



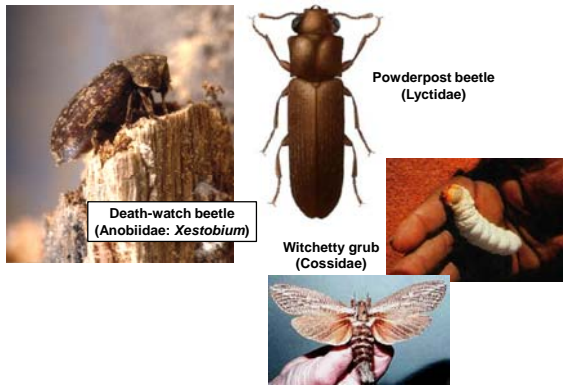
Extra-oral digestion:
Ex. = parasitic wasps



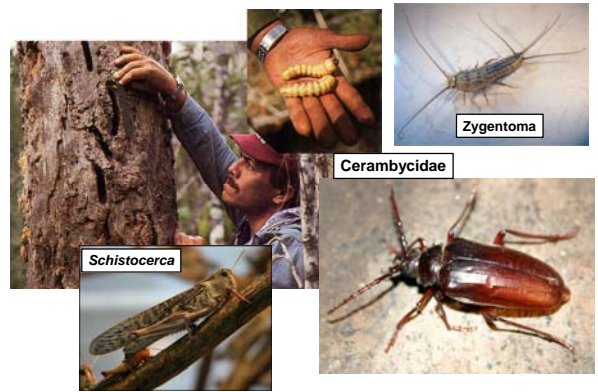
Silk "digestion" (Ex. = Polyphemus moth, *Antheraea polyphemus*)



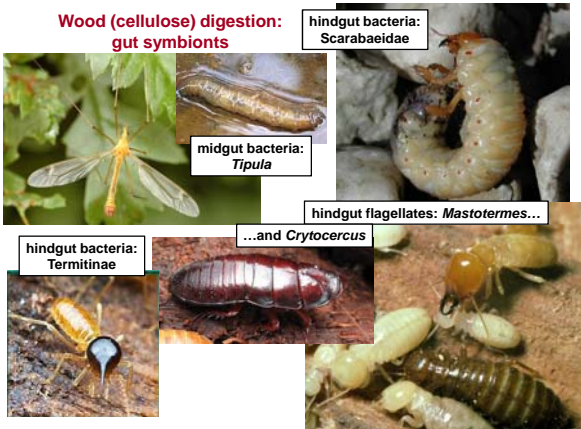
Wood (cellulose) digestion: just the carbs



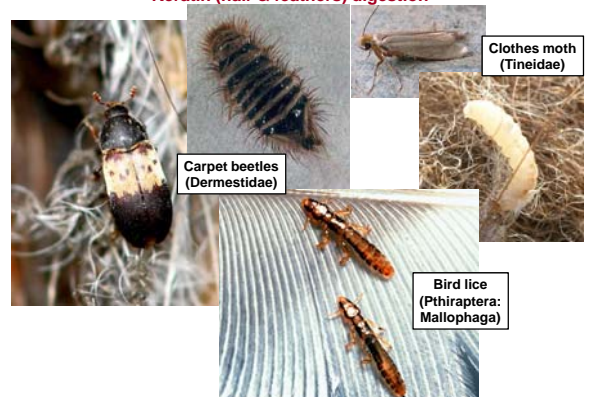
Wood (cellulose) digestion: actual cellulase



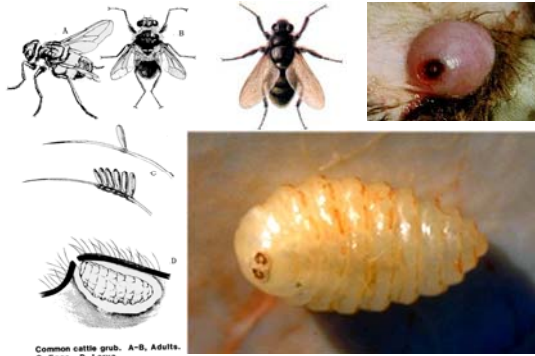
Wood (cellulose) digestion:
gut symbionts



Keratin (hair & feathers) digestion



Collagen digestion: warble flies (*Hypoderma*)



Common cattle grub. A-B, Adults. C, Eggs. D, Larva.

Wax digestion: wax moths (*Galleria spp.*)

