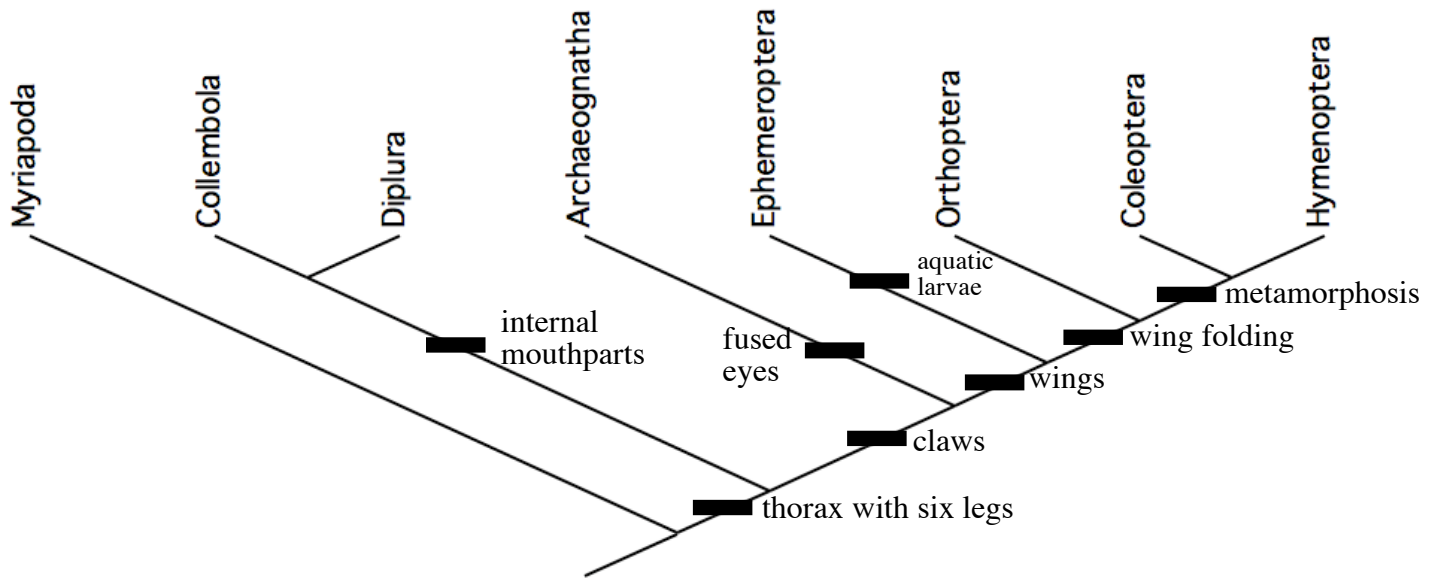


Tree Quiz

Name _____

Score ____/5



Part 1: Use the phylogenetic tree above to answer the following questions.

- 1) The sister group to Orthoptera is _____.
- 2) Two taxa that have wings, but do not metamorphose, are _____ and _____.
- 3) Archaeognatha is more closely related to Ephemeroptera than to Hymenoptera. **TRUE** **FALSE**
- 4) Wing folding is a synapomorphy for Orthoptera. **TRUE** **FALSE**
- 5) Taxa without claws form a monophyletic group. **TRUE** **FALSE**

Part 2: Draw a tree showing the relationships of these five Deuterostome taxa. (2 pts)

Cephalochordata, Chondrichthyes, Echinodermata, Petromyzontoidea, Xenoturbellida